



# SEPTEMBER

**LAWSHALL**

September 2020

[www.lawshallvillagehall.co.uk](http://www.lawshallvillagehall.co.uk)

This magazine is published by

**Lawshall Village Hall Management Committee.**

We reserve the right to edit, shorten or refuse any item submitted for publication and cannot be held responsible for the accuracy of any claims made by advertisers.

## **Copy deadline for October 2020 magazine**

**6pm Saturday 19th September - earlier welcome!**

**Copy should be emailed to the editor, Jenna Kitchen at  
jennalight51@btinternet.com Telephone 01284 830022**

or delivered to Country Lodge, Lambs Lane, Lawshall

(first house on the left, across the crossroads when going from direction of village hall)

To place an **advertisement** in this magazine  
please contact **Leanne Hornby** at **leanneandpeter2@gmail.com**  
**Telephone 01284 830895** or at Hills Farm, Bury Road, IP29 4PJ

### **Black and White Adverts**

Quarter page £6 per issue

Half page £10 per issue

Full page £20 per issue

Back cover £30 per issue

**Wanted / For Sale - £2 per entry; Lost or Found items - Free of charge**

**Welcome to the Village - free of charge, just let the editor know.**

Check out our **website** at **<http://www.lawshallvillagehall.co.uk>**

To discuss anything about the website

please contact Jenna Kitchen on 01284 830022

The proceeds from this magazine will go towards the upkeep and improvement of Lawshall Village Hall, registered charity number 304911

### **VILLAGE HALL HIRE CHARGES**

**Lawshall residents... £14 per hour Other users..... £17 per hour**

**Charges for Groups regularly using the hall are:**

**Weekly users.. £11 per hour**

**Monthly users.. £14 /hour (+ 10% reduction if paid 3 months in advance)**

**Bi-monthly users. £14 /hr (+5% reduction if paid 3 months in advance)**

There are set fees for children's parties available upon request.

**Editorial:** we have had wild and confusing weather as we head towards autumn and the days get shorter. I hope you find much of interest in here despite the restrictions to which we are all subject. Many thanks to all the contributors.

**Many thanks** go to Mr & Mrs Reiman who have delivered Round & About to you stalwartly over the last more than 15 years or so since its first edition. They have now retired from doing the deliveries and we wish them well. Daniel and Sharon have taken over the delivery so there may be a different rhythm to the arrival of R&A each month.

**Village Survey:** page 23-24: the two pages are back to back this month so it is easy to tear out and complete. Please return to the parish clerk or to a parish councillor. You can also get a copy by email from Dorothy.

**New advertisements:** there are a few new advertisements in this edition. Please do let advertisers know where you found their details.

**Lawshall Trust:** Funds are available for those who need some support. the notes and application for are on pages 14-15

**Facebook Lawshall, Suffolk** Relaunching this FB page! The idea is to be positive with suggestions for walks/clubs, meet people from the village, show photos, list items for sale, wanted or just to borrow! A request for help or to advertise your services to the community.

Please do let me know what you would like to see in here and send photos, stories, observations or any contributions—all welcome. Jenna, Editor

5	<b>Contents</b> What's On / Lawshall Ladies	23-4	Village Survey Forms
7	Village Hall News Contact info for MP	25 26-7	Pre School Garden Club
9	Parish Council News	28	Lottery draw results
11	Planning / NHW / DCs	29	Book Club/ Police advice
13	Helplines & Support	30	Village Hall Booking
14-5	Lawshall Trust	31	Tuesday Club / GNO
17	Bird Notes	33	Results of Bird Survey in Golden Wood.
18-9	Travels through Assam	35	All Saints Church Opening
21	Community Woodlands-FOC	37	Weather Report to July
22	Defibrillator Information		

**graphic  
design**  
that  
means  
business!



Great graphic design has the ability to grab attention, capture imagination & encourage you to make a buying decision. Whether you need a new corporate identity, a revitalised brochure, or a compelling exhibition graphic our creative designers will deliver the goods. For graphic design that means business call Kall Kwik now & see what we can do to help you grow.

Kall Kwik Bury St Edmunds, Burrigge House, Brunel Business Court,  
Eastern Way, Bury St Edmunds, Suffolk IP32 7AJ  
t 01284 752266 f 01284 330350  
sales@kallkwikburystedmunds.co.uk • www.kallkwikburystedmunds.co.uk

**kallkwik**<sup>®</sup>  
business design + print



## **The Swan Inn Lawshall**

Tel 01284 828477

[www.swaninnlawshall.com](http://www.swaninnlawshall.com)

We would like to thank everybody that has supported us  
and returned to using the pub.

We are continuing our takeaway service and are taking bookings for those  
who wish to eat in. Please call 01284828477 for bookings and enquiries.

Keep updated with our opening times  
through social media and our blackboards at the front of the pub.

Email [theswanlawshall@gmail.com](mailto:theswanlawshall@gmail.com) WhatsApp 07548315134

Collection times are Wednesday to Saturday 5 -8; Sunday 12 -2pm

Afternoon tea and dessert boxes can be flexible on collection or delivery

We recommend ordering the day before especially on weekends.

Menu updates are made on instagram and facebook or we can email you.

Laura and Lawrence

## What's On in Lawshall in September 2020

### This Month:

The village hall is starting to re-open for low to medium risk activities

Monday 7th **Lawshall Community Woodlands—Forest for Our Children**  
Steering Group Meeting. Venue TBA

Tuesday 8th **Parish Council Meeting** (2nd Tues)

Saturday 12th **Girls Night Out walk for Hospice** see page 31

### Weekly Regulars:

**WEDNESDAYS, 10.30HRS – 12.00HRS WEEKLY** Outside Lawshall Village Hall

**Stall Of Fresh** Fruit, Berries, Vegetables and Salad, Eggs

Even though the Wednesday Market has started again in Bury the vegetable stall at the **village hall will continue as long as we use it** - please keep getting your fruit and vegetables there.

**NEW WEDNESDAY 5-7:30pm Fish N Chip van** - village hall car park **p22**

**Future Events:** may be cancelled due to Coronavirus

Sat 31st October 10.00 - 12.30 pm **Sing** with Chris Rowbury, Hartest Inst.

### Lawshall Ladies:

An email and WhatsApp message had been sent round to members to gain their views on restarting the group. Not everybody responded but there were 11 ladies who felt ok about meeting up again and five definite not yet with myself currently sitting on the fence. There was some talk at book club from a member of the planning group that there could be a picnic in August with everybody obviously bringing their own food and drink but this is only a suggestion at present. It was felt we could look at opening the group again in September with a definite activity so that we could comply with all the rules and regulations currently in place.

Please ladies look at your WhatsApp and emails to keep up to date with what is happening and get back to me where necessary. Rosemary

# The Long Melford Practice Tel 01787 378226

website : <http://www.mysurgerywebsite.co.uk/ppg.aspx?p=D83014>

## Long Melford Opening Hours:W

Weekdays 8.00 a.m. – 6.30 p.m.

**Address:** Cordell Road,  
Long Melford Sudbury CO10 9EP

## Dispensary Opening Times

Monday – Friday 8.30 am - 1.00 pm  
and 2.00pm - 6.30 pm

## Lavenham Opening Hours:

Weekdays: 8.30 a.m. – 1.00 p.m.  
2.00 p.m.—6.30 p.m.

**Address:** 36 Church Street,  
Lavenham, Sudbury CO10

We are pleased to welcome Dr Shalini Cross as a new permanent member of our team.

We would like to say **THANK YOU** to all our patients for their forbearance during this COVID 19 outbreak. We appreciate the difficulties and challenges you are facing and we are doing all we can to support you and keep you safe.

**Re: contacting the surgery:** If you have a new continuous dry cough and/ or a fever to self-isolate for 7 days. If you become unwell during this time to call NHS 111. **Do not** come down to the surgery. **Do not** go to the Pharmacy. **Do not** go to hospital unless you have been advised to do so.



## Seasoned Logs For Sale

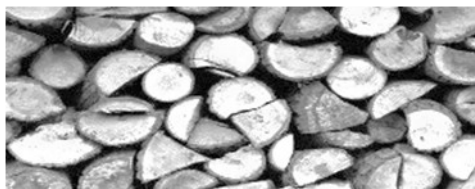
Mixture of hard and soft wood

Can be cut to required size

Free Local delivery

Friendly Service

Call William : 07789593653



## Could your garden do with a bit of TLC?

Local gardening service.

Lawns mowed, hedges cut, weeds removed, etc.

Reasonable price and friendly service.

Call Adrian Murrell

on **01284 830141**



# LAWSHALL VILLAGE HALL

## – for you to use and enjoy

[www.lawshallvillagehall.co.uk](http://www.lawshallvillagehall.co.uk)

You can view or download a copy of R&A from the website.

### Hall Re-Opening....

The guidance keeps being updated—version 4 on 20th July, and version 5 on 17th August which I have yet to view in detail. It would help if the items updated were either listed or readily identifiable but they are not.

There are now 12 appendices. More reading!

Meetings for smaller numbers of people are permitted, maintaining social distancing and rigorous cleaning procedures. We will also need to rotate the use of chairs as our padded chairs will need to be in quarantine for at least 72 hours between uses. No more than two people can be in the kitchen at any one time.

Ian and Julian have worked hard to install railings at the exit from the hall to make that safer to use:

We will be meeting on 24th August to explore how an indoor market can take place as the valued fruit and vegetable stall may be able to go inside as the weather deteriorates we have been so lucky so far. Curiously this is deemed an essential service and is permitted subject to

the guidance for the retail sector which we have all encountered.



As you can see in the photo, we also need to look to getting the planned replastering of the outside frieze started.

Jenna, for VHMC

## GREENLINE TRAVEL

Tel: 07754 298690

Email: [greenlinetravel@live.co.uk](mailto:greenlinetravel@live.co.uk)

24 hour 7 days a week service to & from airports, ports and local area.

Please call us for a competitive quote.  
Service includes from and to:

Stansted £58.00 Gatwick £115.00

Heathrow £110.00 All Sea Ports

Luton £80.00 London City £90.00Tel:

**07754 298690**



Friendly, reliable  
and  
fully licensed  
6 seater car.

## *Ground Work & Plant Hire*

Mini Digger & Driver for Hire

Driveways & Pathways

Drainage Work

Footings & Over-sites

Garden & Site Clearance

## **C S CONTRACTORS**

108 Horringer Road

Bury St Edmunds IP33 2DP

**01284 724048**

**Mobile 07720 843577**

## TIME FOR YOU™

DOMESTIC CLEANING

Reliable - Weekly - Insured - Cleaners



**We clean so  
you don't have  
to!**

Call us on  
**01359 258991**

Typically £12 per hour



[www.timeforyou.co.uk](http://www.timeforyou.co.uk)  
[suffolk@timeforyou.co.uk](mailto:suffolk@timeforyou.co.uk)

## Kevin Seggie

Electrical Services

Bury Road, Lawshall

Tel **01284 830 786**

Mobile: **07768108157**

Email: [cudbatey@yahoo.co.uk](mailto:cudbatey@yahoo.co.uk)

**ELECSA**  
Part of the ECA Group

Part P  
Approved Contractor

[www.elecsa.co.uk](http://www.elecsa.co.uk)

Testing & Inspection  
Portable Appliance Testing  
Rewires; New Build  
New Consumer Units, CCTV

# Parish Council Report August 2020

[www.lawshall.suffolk.gov.uk](http://www.lawshall.suffolk.gov.uk)

**Scams:** Please be aware that all kinds of scams are appearing regularly. By email, telephone, your home. If you are suspicious about any of them, **do not take part, especially ones asking for money to be withdrawn from your Bank.** Contact a relative, neighbour or friend for advice. You can also report to the Police on 101.

**Parish Council meetings:** These will be held for the foreseeable future, (as advised by the National Association of Local Councils,) remotely via email or telephone, unless there are items that need to be discussed, face to face (at social distance of course) then the meetings will be held in a Councillor's garden with just Councillors and the Clerk present. If there is anything you would like to be included on the agenda for discussion please let the Clerk know. The meetings are held on the 2nd Tuesday of each month and the agenda is prepared the week before.

**Glebe Stores:** We have received details from Hazell's re: renting the shop. It can be rented as a community venture for £4,000.00 per annum. If anyone is interested in this venture please contact the Clerk or any of the Councillors.

**Crime report: as per the Police website: reported June 2020:**

**On or near Churchill Close:** anti-social behaviour.

**On or near Shepherds Drive:** criminal damage and arson.

Dorothy Griggs - Parish Clerk 01284 830813

## Neighbourhood Watch

If you are a resident and would like to join please find us on Facebook under "Lawshall Neighbourhood watch"

Lots of useful ideas are being posted on the Facebook group—thank you to all those who are involved in helping our village and villagers.

To Contact our Local MP: especially in regard to covid –19 issues

[James.cartlidge.mp@parliament.uk](mailto:James.cartlidge.mp@parliament.uk)

Telephone 020 7219 4875

Website [www.jamescartlidge.com/covid-19](http://www.jamescartlidge.com/covid-19)

# **WATERSON**

## **Plumbing & Heating**

*All Domestic Plumbing Work Undertaken*

*Full Bathroom Installation and Tiling Service*

*Oil Appliance Commissioning, Servicing, Repair / Replacement*

*Domestic & Non-domestic Oil Storage and Supply Installation*

*Central Heating Installations*

*Unvented Cylinders Installed*

*References Available on Request*

**OFTEC Registered Technician No. 28970**

**Home 01359 760528 Mobile: 07828639138**

Email: [Jeremy@watersonplumbing.com](mailto:Jeremy@watersonplumbing.com)

# **SUFFOLK FARM FENCING**

**Milner Rd Chilton Ind Est. Sudbury Suffolk CO10 2XG**

**Tel: 01787 375023**

**[www.suffolkfarmfencing.co.uk](http://www.suffolkfarmfencing.co.uk)**

**Garden Fencing - Dog Fencing - Post & Rail Fencing  
Wire Netting - PVC Coated Mesh - Round/Square Posts  
Mini Sleepers - Railway Sleepers**

## Planning Applications:

ALL PLANNING APPLICATIONS ARE NOW VIEWED  
BY COUNCILLORS ON LINE:  
COMMENTS WILL BE SENT TO BABERGH D.C. ON LINE.

### Planning Applications received:

**No. DC/20/02452: MGT (Suffolk) Ltd:** use of land as transportation and storage yard including creation of attenuation basin and hard standing. The Councillors discussed the application and decided that they could not support this application due to lack of detailed information.

**No. DC/20/03245: land to the south of Beechwood House, Bury Road: FOR PLANNING PERMISSION WITHOUT COMPLIANCE OF CONDITIONS:** application under Section 73 of the Town & Country Planning Act - Variation of Condition 2 (Approved Plans and Documents) on planning permission DC/19/05806 (For the phased erection of 5 dwellings and creation of Associated Single Access. Awaiting approval from the NHPlan Watchdog.

**DISCHARGE OF CONDITIONS Application No. DC/20/02416: Green Farm Barn, The Green, Lawshall: DISCHARGE OF CONDITIONS FOR DC/19/05618:** Condition 4 (Landscaping Scheme), Condition 7 (Biodiversity Enhancement Strategy), Condition 8 (Lighting Design Scheme, Condition 9 (Construction Management Plan), and Condition 11 (Storage & Presentation of Refuse) Recycling Bins.

Dorothy Griggs Parish Clerk 01284 830813.

**District Councillors** for Chadacre Ward:

**Stephen Plumb.** email: Stephen.Plumb@babergh.gov.uk and

**Michael Holt.** email: Michael.Holt@babergh.gov.uk

Dcillr **Stephen Plumb** holds a Ward Surgery in **Glemsford** every 3rd Friday and everyone is welcome to attend with any queries or questions.

**Cllr. Plumb** is willing to hold a Surgery in **Lawshall** if there are enough people interested in this. If you would like this to start in Lawshall please contact the Parish Clerk. Dorothy Griggs 01284 830183

**Paul Jones**

Oil boiler service, maintenance & repair  
General plumbing, heating & electrical control wiring



**Plumbing, Heating & Electrical Services**

**07932 038474**

paulmaintenancejones@outlook.com

Oftec oil boiler service  
Smart heating installation  
Plumbing works  
Water storage and heating  
Appliance installation  
Emergency plumbing  
Heating system installation / maintenance  
Commercial and domestic

**JP Services**

**Sleepers – Timber**

**Scaffold Boards**

**Oak Barrels**

**Supplied**

**07970 559251**

**www.jp-services.info**



**Chiropodist**

**Established & locally based** (Alpheton)

- Quality foot care
- Caring service tailored to your individual needs
- Expert advice
- Experienced with additional nursing qualification

*If you are unsure as to whether chiropody is for you, please do not hesitate to contact me.*

**Elizabeth Gibson MSSCh MBChA**  
Health & Care Professions Council Registered  
• Reg. No. CH20192



[www.hcpc-uk.org](http://www.hcpc-uk.org)

**CLINIC**  
**Casabella**

Hall St. Long Melford  
CO10 9HY

T: 01787 370300

**HOME VISITING PRACTICE**

Long Melford, Sudbury, Clare  
& surrounding villages.

T: 01284 827380 M: 07798 806184

## Helplines and Support

The **Village Help Group** has been offering practical support to people in the village e.g. help with shopping and collecting medicines if you are self isolating.  
Call Laura on 01284 828 477

**If you are worried about someone's safety** call CustomerFirst (the Suffolk Safeguarding Partnership) 0808 800 4005.

**NHS Volunteer Responders** 0808 196 3646  
nhsvolunteerresponders.org.uk

**Domestic Violence** 24hr National Domestic Abuse Helpline 0800 2000246

Bury Women's Aid (Bury Refuge) – 01284 753085

[admin@burystedmundswomensaid.org.uk](mailto:admin@burystedmundswomensaid.org.uk)

### **Are you hurting the ones you love?**

Choose to stop. For support go to <https://respectphonenumber.org.uk> or call the Freephone no: [0808 8024040](tel:08088024040)

If you or someone else is in **immediate danger** Make an Emergency Call: **999**.

### **Financial Help**

National Debt Helpline: 0808 808 4000

<https://www.nationaldebtline.org/Pages/coronavirus-and-your-money.aspx>

**Farmers Help** <https://www.farminghelp.co.uk/> 03000 111 999

**Worried about your mental health?** First Response is a new 24/7 helpline offering immediate advice, support and signposting for people with mental health difficulties in Suffolk. If you are experiencing something that makes you feel unsafe, distressed or worried about your mental health you can now call the helpline on **0808 196 3494**. <https://www.nsfh.nhs.uk/Find-help/Pages/Helpline.aspx>

If you are having thoughts of suicide call **The Samaritans on 116 123** 24/7



THE CHURCH  
OF ENGLAND



Faith in Later Life

CONNECTIONS

**Daily Hope** phone line for hymns, reflections, prayers 0800 804 8044

## **In danger, need the police, but can't speak?**

- 1** Dial 999
- 2** Listen to the questions from the 999 operator
- 3** Respond by coughing or tapping the handset if you can
- 4** If prompted, press **55**  
This lets the 999 call operator know it's a genuine emergency and you'll be put through to the police.

## The Lawshall Trust

There are two trusts in the village administered by the Lawshall Trustees. They each get funds from dividends on investments, which arise as a result of bequests of land and money left to the people of Lawshall throughout its history.

For example the Village Hall was built on "Town Lands" which was left to the village in this way.

The Lawshall Relief Fund this fund exists for the following purpose

"to relieve either generally or individually persons, resident in the ancient parish of Lawshall, who are in conditions of need, hardship or distress by making grants of money or providing items, services or facilities calculated to reduce the needs, hardship or distress of such persons".

We give thanks for the men of Lawshall who in the 16th Century started the Trust for our village.

The Lawshall Trust is still there today for those persons who need help. Over the years there have been many who have needed a helping hand, young people and the elderly.

Also any organisation in the village can ask for assistance, as long as it is village based.

Whatever help is needed, **everything is confidential.**

We meet in May and November to decide on the support we give out.

If you want to apply for funds  
please use the form printed opposite.

## Lawshall Relief and Trust funds

### Application for Assistance

The Lawshall Relief and Trust funds have been in existence in one form or another for almost 500 years and exist to support the residents of the village. Support can be applied for from a wide selection of criteria such as help at Christmas, to students purchasing study books or helping local Clubs or organisations meet their financial obligations. There is no specific time at which these applications can be made, but we like to remind everyone that there is this option at this time of year.

If you are interested in making an application please could you complete the details below and return the form to either;

- Jean Clements at Sunnyridge Cottage, Hibbs Green 01284 828423
- Brian Adams at Moat Farm, Golden Lane 01284 830098

Name / Organisation .....

Address .....

Telephone Number .....

Reason for Application .....

Declaration, this form has been completed to the best of my knowledge

Signature .....

Age if not part of an organisation .....

Please be assured that any application is kept confidential and is only seen by the trustees  
Registered charity No 2564045 / 230906

# Wayne Mills Construction

We are a small building company with 35 years experience in the trade covering all aspects of building including extensions, alterations & renovations.

*We specialize in older properties & all the trades have minimum of 35 years experience each. We are happy to do small jobs ~ garden walls, bathrooms & kitchens up to complete house renovations & extensions.*

**01787 828808**  
**07780 546527**

## Chimney Matters

Town and Country



**Professional Chimney Sweeping &  
Stove Installation**

- Open fires, Wood burners swept & serviced for **maximum efficiency**
- Wood & Multi-fuel Stoves fitted
- Certificates issued and fully insured
- Cows & Bird Guards supplied & fitted

Mobile : 07767 864127

Phone: 01284 789663

[www.chimneymatters.co.uk](http://www.chimneymatters.co.uk)



## Swayne and Partners Veterinary Surgeons



**Providing 24 hour  
veterinary care  
across West Suffolk**

**Bury St Edmunds 01284 701444**

**Haverhill 01440 702007**

**Long Melford 01787 370773**

**Newmarket 01638 662253**

## DKC PLUMBING Oil Boiler Specialists

Oil Fired Boilers Servicing.  
Boiler Breakdowns.

Boiler Installations and Repairs.

Oil Tank Installations.

Radiator Power Flush.

General Plumbing.

Heating Systems.

Domestic and Commercial.

24 hour call out.

Fully insured.

OFTEC REGISTERED.

**Call: 07740 272791**

## Bird Notes by Cliff Cooper September 2020

As the abnormally hot summer weather seems to have gone now and we start to drift into the autumn, it has been fairly quiet in the birding world of Lawshall. Hopefully we will soon be seeing more as the migration gets going once more- the cycle of life for the birds will take no account of Covid-19, and things will continue as they always have.

The lack of bird sounds was brought home to me recently when I had a walk on my own round Golden wood. All I heard was a blue tit, a green woodpecker, and a swallow calling over the horse pasture. However, as I reached the western edge of the wood I could see at least 25 swallows, some resting on the power lines and the others hawking over the sheep field (which currently holds cows) feeding on the insects.

Back home, the house martins appear to have done really well this year in the dry spell; they have been prospecting for potential nest sites ready for next year. I counted up to 30 on one day, but not one of them even had a look at our artificial nests! I'm getting paranoid about these nests- what's wrong with them? They look realistic and they are situated where real nests have been successful previously. I just don't know.

Now that the harvest is all but done and the fields have gone from golden yellow wheat and barley to bare brown seeded earth, it becomes a little bit easier to spot the smaller birds.



The few linnets that have been seen all summer suddenly turn into flocks of 50 or more.

The yellowhammers also stand out more against the darker background, the males now looking a bit less like canaries than they did in the spring.

## PASSAGE THROUGH ASSAM AND BEYOND

by Leanne Hornby

In this unprecedented time, holidays appear to be only a fond memory and hope, that with a return to some form of normality they will once more be a regular occurrence, is one important factor that keeps us going. I am sure you have had, at some time in your life, a holiday which could be regarded as exceptional, unusual, disastrous or even not to be repeated and we wonder whether you would like to share your experience to provide entertainment value for us all. To start the ball rolling, as the old adage goes, I am writing down my experience of travelling to India some 7 years ago with my husband, a trip which the actors Timothy West and his wife Prunella Scales took a few years later.

My great-grandfather was Henry Halford Brownlow, whose claim to fame was that he was the oldest living tea planter in India when he died in 1913 at his son's Sungloo Tea Estate in Chittagong. Likewise my paternal grandfather Thomas Wilford Blewitt was also a tea planter at Phooltullah Estate, Sylhet, Assam and it is for this reason that, when my husband suggested we should see something of India where my long gone relatives lived, I thought it seemed a good idea and worth following since time was passing more quickly than we would like. Also my second cousin Don Blewitt a former Major in the Indian army and the last of the family in India had encouraged us to go and visit him in Secunderabad.

So in February 2013 we flew from Heathrow to Kolkata (Calcutta) and stayed one night at the Taj Bengal Hotel (very smart) before flying to Guwahati where we were due to pick up a boat and journey up the Brahmaputra for some 200 miles over a two week period.

Before joining our ship we had a tour of Guwahati and went to the World War 2 cemetery, which is the only one there now, any earlier ones having long since disappeared unfortunately. Guwahati was quite a dump and must have been even worse when Charles Brownlow, my great-grandfather's father, arrived there under the auspices of the East India Company to be librarian and record keeper in the early 19<sup>th</sup> century.

After the tour we joined our ship the Charaidew. She was a bit of a relic, but carried 21 passengers and almost as many crew. She was just about on her last legs (has now been put out to pasture I understand) but was quite comfortable except that the interior was lined with bamboo (nearly everything is made of bamboo in India) and when the ship moved our whole world shook with a tremendous noise so there was never any chance of having a quiet rest in the afternoon whilst on the move.

We travelled during the day but stopped in the evening before the light faded since there was no way of navigating in safety upstream (no navigation lights

and no warning of the perimeters of the river itself). Just as well we stopped at night otherwise we wouldn't have had any sleep during the two weeks of our journey upstream. For the most part the river although often only six feet deep is immensely wide and sometimes you cannot see from one side to the other. It is more like a delta than the usual type of river with which we are familiar. It is filled with sandbanks wide enough to house whole villages with ease, though the villages often have to re-locate since the sandbanks are continually falling into the river. When the monsoon comes many of the sandbanks disappear or flood making life very difficult for the residents.

On the way we stopped at several native sandbank villages and each village would come out to greet us and wave goodbye. They don't see many tourists undertaking this type of journey and we were something of a novelty. It was wonderfully quiet on the river, when we were stationary. Except for the occasional fisherman passing there was no sound at all just perfect stillness, an eeriness reflected in the ethereal light that surrounded us.



When we stopped at night the crew threw the anchor onto a sandbank and there we remained until the morning.

..... More next month.



# **SICKLESMERE STORES AND POST OFFICE**

25 June : Temporarily CLOSED by flood

**NEWSPAPERS are available for delivery**



We are only in the early stages of repair at the moment. The first team come in once a week to decontaminate the floors and units in the shop and our home, as well as ripping up all flooring, plaster from walls etc, so due to furloughed staff he can only come once a week at the moment. We are still drying the shop out for another week at least. Then we have a 3 week tender period for the selected builders, then I expect another week before a builder sets foot in here. Not sure how many weeks it will take to get us back to where we were in mid June so I would say the end of October/beginning of November is a more realistic date for a re-opening.

**CONTACT US ON 01284 386303 DURING OPENING HOURS**

## **Excelan Chauffeur Services**

01284 789503 & 07816663542

[www.excelan.co.uk](http://www.excelan.co.uk)



Quality and affordable travel service

Vehicles include the BMW , Audi & Mercedes Benz

Airport Transfers \* Seaports \* Euro Star Terminals

\* Weddings \* Bespoke journeys

Lawshall to Stansted £70 \* Heathrow £120 \* Luton £90.

London £125.

Credit & debit cards are free of transaction charges.

Licensed by St.Edmundsbury

Council & enhanced criminal

records bureau check





## Lawshall Community Woodlands

### Forest for Our Children

Despite the obvious limitations that 2020 has imposed on all of us, we were delighted to receive numerous entries to our Wildspaces competition – in all three of

the categories.

The judges saw evidence of wild life ponds; bee and butterfly friendly plants; compost heaps; log piles; bug hotels; hedges and nettle areas; bird and bat boxes; bird feeders and baths; fruit trees; hay meadows; wild flower areas; and aromatic plants to attract bats.

We hope that next year we will be able to encourage more Lawshall Gardeners to take part, so watch this space for details and start planning your gardens!

Monthly working parties are continuing in the woods, following government guidelines, so currently these are restricted to regular volunteers who work individually or in pairs. This month the rides in Golden Wood have been cleared, cranesbill plants removed from the wild flower meadow (to stop them crowding out other wild flowers) and the pond has been overhauled.

There is a report from the Bird Survey, carried out earlier this summer, elsewhere in the magazine.

#### **Wildspace Winning Entries - CONGRATULATIONS**

Business Community Area: Outstanding.global -  
Nigel Hughes

Garden: Jackie & Lewis Rogers

Children's Project: Hope & Ethan Mackie

*(see the website & Facebook page for pictures)*



**[www.forestforourchildren.onesuffolk.net](http://www.forestforourchildren.onesuffolk.net)**

## GRASS ROOTS



Little jobs getting  
on top of you?



www.leggo.co.uk #0002

Then why not give me a call—  
I can help with:

- Grass & hedge cutting
- Other small gardening jobs
- DIY jobs
- General repairs and maintenance
- Small plumbing jobs
- Painting and decorating

Many years of experience,  
completely reliable  
with DBS check and reasonable rates.

Contact: Richard on 07553 747671

Facebook: Grass Roots

✉ Sharpsgold49@gmail.com

AT LAWSHALL VILLAGE HALL CAR PARK

## FISH & CHIP VAN EVERY WEDNESDAY 5-7.30PM

Cod	
Regular size.....	£5.50
Large size.....	£6.50
Haddocks Regular size.....	£6.00
Breaded Scampi.....	£6.00
Sausage (battered or plain).....	£1.50
Spring Rolls (6pcs) .....	£4.00
Halloumi Battered .....	£4.00
Chips	
Regular.....	£2.00
Large.....	£3.50

GALLEY SLAVES  
RESTAURANT



The Defibrillator machine is located at  
the Willows Residential Home, on Bury Road IP29 4PJ,  
Telephone Number 01284 830665.

It is located on the outside of the front entrance for easy access.

Access can be gained 24hrs, 7days a week. Access code: C1650



The other Defibrillator in Lawshall is located at The Swan  
Public House. To access phone 999.

Are you confident in how to use an automated defibrilla-  
tor?

Do you know that the ambulance service offer support to guide you  
through the process.

Is it time to refresh your basic life support / First Aid skills?

# Lawshall Community Centre

## Survey Questions

Thank you for taking the time to complete this survey. The Community Centre Committee would like your help to develop plans for a new community centre. We need information that only you can provide, to help with preparation of a design brief for an architect, and to make a case for grant funding. This survey is being distributed to every household in the village and after it has been evaluated the results will be published. If you would prefer to scan/photograph the survey and send it electronically it can be emailed to [dorothygriggs@btinternet.com](mailto:dorothygriggs@btinternet.com)

1. What facilities would you like to see in the Lawshall Community Centre.

Facilities	Person 1	Person 2	Person 3	Person 4	Person 5
Village hall including disabled access/toilets					
Kitchen and toilets					
Separate meeting room					
Stage facilities/film projection					
Community village shop – post office.					
Small library					
Coffee shop					
Eco friendly build – renewable energy (wind, solar panel heat source)					
Provision of electric car charging point					
Bar facilities					
Storage facilities					
<b>Sports facilities</b>					
Football pitch					
Cricket pitch					
Tennis court					
Basketball court					
Hockey					
Athletics track					

2. Would you be interested in participating in any of the following organisations?

Organisations/Activities	Person 1	Person 2	Person 3	Person 4	Person 5
Lawshall ladies					
Youth club					
Rainbow/Beavers/Scouts/Cubs/Brownies/Guides					
Parents and toddlers					
Over 60's					
Educational classes, e.g. languages and IT					
Keep fit classes, e.g. Yoga, Pilates					
Arts and crafts					
Gardening club					
Table tennis					

Indoor bowls					
Martial arts e.g Judo, Karate, Tai Chi					
Drama					
Dancing					
Card games					
Quiz nights					
Cycling club					
Classic car club					

3. Do you currently use the village hall?

Response	Person 1	Person 2	Person 3	Person 4	Person 5
YES					
NO					

4. Please indicate your age group:

Age Range	Person 1	Person 2	Person 3	Person 4	Person 5
0-14					
15-21					
22-40					
41-60					
60+					

5. Would you be interested in joining the Community Project Committee and/or willing to help with fundraising? **Please supply name and contact details.**

Response	Person 1	Person 2	Person 3	Person 4	Person 5
YES					
Name:					
Telephone:					
Email:					
NO					

6. Have you any other suggestions?



## Firewood Logs:

£7.50 per bag

or truckload of 1.25cubic metres £85

Larger loads available. Out of season and unseasoned firewood at a discount.

Call for details.

Free delivery within 5 miles of Lawshall

### Digger Hire:

Driveways, paths and flowerbeds.

Ponds dug or cleared. Grass cutting. Pad-dock maintenance.

Groundwork & footings. **Ray Debenham, Coopers Farm, Lawshall.**

Tel 07908 656098 01284 830262

[raydebenham@hotmail.com](mailto:raydebenham@hotmail.com)



**DOMESTIC & COMMERCIAL APPROVED**

**Registered No: 6558**

**Part P Registered**

## K CORNELL ELECTRICAL CONTRACTOR

Snaefell

Lambs Lane

Lawshall

Bury St. Edmunds

Suffolk

IP29 4PE

Telephone: 01284 830287

Mobile: 07740 700614

Email: [kevincornell95@googlemail.com](mailto:kevincornell95@googlemail.com)

We



Lawshall Pre-School

are so looking forward to going back to Pre-School in September - some of us have not been there since March and we have been missing all of our friends.

There will be new friends to make as well, with the children who are starting at Pre-School for the first time. As well as welcoming and finding out all about the new starters, our adults will also have to get to know us all over again - we have changed so much over the last five months (and have definitely grown taller!)

Our world has changed a lot since we have all been together and our adults will be focusing on our wellbeing - when we feel happy and secure then we are able to learn all the skills that Pre-School has to offer.

We still have spaces available for some of our sessions.

If you would like any further information please feel free to contact us on 01284 827588 or

e-mail us on [lawshallpreschool@hotmail.co.uk](mailto:lawshallpreschool@hotmail.co.uk)

## LAWSHALL GARDEN CLUB September 2020 Lawns -

September can be a strange month in so much as we never know what the weather is going to deliver. It can be a hot month extending the summer. It can be wet, and it is not beyond the realms of possibility that we could be hit by frosts. So, what should we be doing in our gardens?

Over the summer months our lawns take a bit of a battering and probably more so this year as we have spent so much more time at home. In this article, I shall cover



lawns and what we should be doing with them at this time. There is a fairly set process for rejuvenating a lawn which begins with a good mow, making sure to collect the clippings. Then the grass needs to be raked well to remove moss and weeds. Most weeds will creep along under the blades of a mower so a good strong raking will lift them. If you have a small

lawn, raking can be done with a hand rake, but you might need an electric or higher powered lawnraker for larger areas. These can be hired if needed or borrow one from a friend or neighbour. I once bought one with my neighbour to lower the cost and we shared it for many years.

You may be surprised at how much raking brings to the surface and your lawn may look scruffy and patchy afterwards, but do not worry as it will soon perk up after a short while. After raking, mow again, but at right angles to the direction you first mowed. This will pick up all the thatch and weeds disturbed when raking.

Now we come to the tough bit. Spiking! I am the first to admit that this can be hard work, but it is certainly worth it. The simplest way is to fork the lawn to a depth of about 3 to 4 inches, every 6 inches or so. This reduces compaction brought about through regular walking on areas during the summer. It allows air in and improves drainage. If you find this too hard then just do small areas at a time as there is no need to get all this done in one day. Again, you can hire lawn aerators which make the job easier.

After all this it is time to feed and top dress the lawn. Do not be tempted to use up old summer lawn feed as this will do no good at all and could damage your grass further. A good Autumn lawn feed is needed which is low in nitrogen. It will toughen the lawn up ready for winter. Be careful to spread it according to the instructions on the packet. Small lawns can be covered by hand and larger lawns are better done with a spreader which can be purchased quite cheaply. Ideally you should spread the lawn feed when the grass is dry, but the soil underneath is damp. If it doesn't rain within a couple of days, it should be watered in. It is best to keep an eye on the weather forecast to determine when is best to carry out this task.

Finally, we have top dressing. This is worth doing if you have a good lawn or if your lawn is sitting on clay or exceptionally fine soil. Its' purpose is to improve the surface drainage and aeration of your lawn. You can buy lawn dressing from most garden centres or similar outlets or you can make your own with a mixture of topsoil, compost and gritty horticultural sand. You only need to sprinkle about a quarter of an inch over the lawn and this should be brushed in with a good stiff broom or besom. If you have aerated/spiked the lawn, some will go into the holes generated. Do not put too much down as you may smother the grass and kill it.



Other lawn repairs can be completed this month too, including seeding bare patches, repairing damaged edges and reshaping areas. I don't have the space to cover all of this now, but I will look at that and at seeding or turfing in my next article. Just remember not to make this a chore. Just do small sections at a time and enjoy the results. In the meantime, keep deadheading and enjoy your gardens. The garden club is currently suspended pending an improvement in safety conditions around the pandemic, but I will keep you updated with news as and when I have it. David Henderson

## Lawshall Village Hall Draw Results August 2020

First Prize £50:	72	Ann Thatcher
Second Prize £20:	166	Vera Hammond
Third Prize £10:	268	Mr Lane
Fourth Prize £10:	302	Rosemary Riches
Fifth Prize £10:	105	Rosemary Riches

If **you** would like to support your Village Hall lottery

please contact **John Chappell on 01284 830530**

or download the application form from the village hall website at  
**<http://lawshallvillagehall.co.uk/lottery-2/>**

You can also use this form to set up a regular donation  
to support your village hall.

Or set up donations via your online bank account.

The Village Hall Account details are on the standing order form.

# STUART FOWLER

## CONSTRUCTION & ROOFING SERVICES

**For all of your Property maintenance & Construction needs.**

**Specialising in Fibreglass & EPDM Rubber roofing**

**From general handyman service to large projects.**

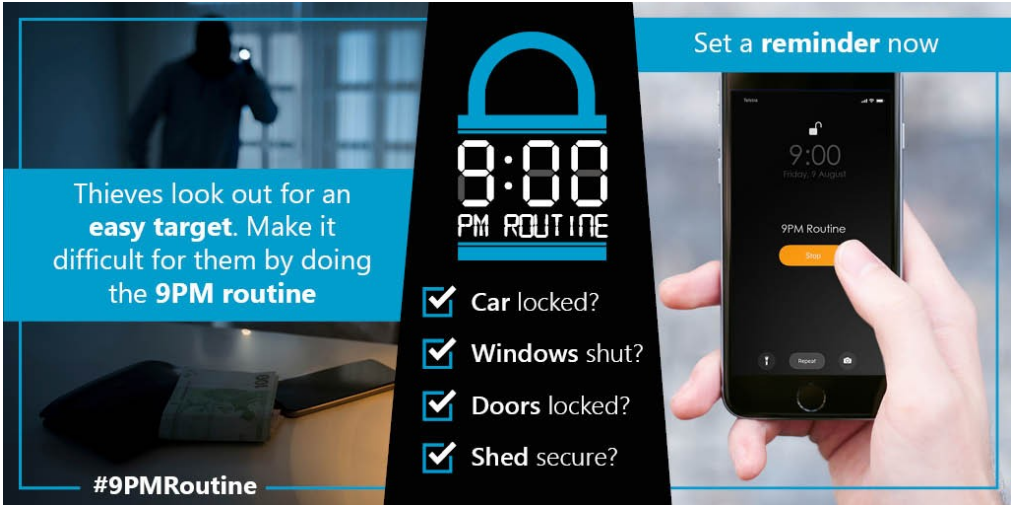
**Over 20 years experience**

**FREE ESTIMATES**

TEL: 07545 869 693

EMAIL: [stuart.fpm@yahoo.com](mailto:stuart.fpm@yahoo.com)

# Suffolk Constabulary backs 9pm routine in a bid to thwart thieves



Thieves look out for an **easy target**. Make it difficult for them by doing the **9PM routine**

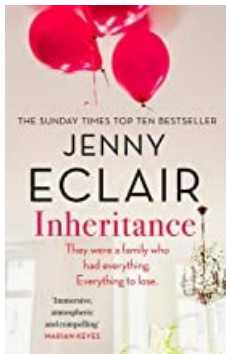
**#9PMRoutine**

- Car locked?
- Windows shut?
- Doors locked?
- Shed secure?

Set a **reminder now**

## Lawshall Ladies Book Club

Five ladies met in Rosemary's to discuss "The Inheritance by Jenny Eclair".



Once again there were mixed times reviews on the book. The story basically revolved around a big house by the coast in Cornwall purchased by a descendant of Randolph Oppenheim who wanted a retreat away from London and her husband! However tragedy befell with the death of the favourite son leading to Peggy retreating to America leaving the remaining two children behind. In adulthood one of the children used the house as a party place where drink and drugs were present. After a while a baby was discovered by the housekeeper left to mind the house in a drawer in one of the bedrooms. This baby was adopted, not through the usual way, by a sister of the young boy who had died in the belief that the father of the baby was the younger brother. Time passed and the house eventually passed to a grandson whose wife revamped the house to a high standard. The book jumps about a bit as seems to be the norm in modern books. Quite a focus was on Belle who was the adopted child and who did not fare that well with her adopted family - anyway, it did not all end happily ever after for the adopted child but if this has put you off reading the book then you have not missed a great deal although I quite enjoyed the alternate ending!!

Next month we are reading "The Pillars of the Earth by Ken Follett" and will be meeting in Annie's garden, weather permitting. Rosemary

## Village Hall Booking:



For meetings, classes, gatherings of no more than 30 people under Covid guidance

Specific conditions apply

### Hiring Charges:

£14 per hour for Lawshall Residents:

£17 per hour for non residents

- \*All day hire and small meeting rooms by arrangement
- \*Large Main Hall - 15m by 9m with stage and high ceiling
  - \*Jubilee Room 8m by 4m with hatch to kitchen
  - \*Outside Lawn suitable for large marquee;
  - \*Good sized parking area. \* Full kitchen facilities
- 10% discount for regular hirers paying in full in advance
  - We do have a **projector** available on request

*Please contact booking secretary:*

**Sharon Marshall** on 01284 830182 email: [shazy68@hotmail.co.uk](mailto:shazy68@hotmail.co.uk)

## Stephen's Bookkeeping Services

With over six years working in an accounting firm let me handle the bookkeeping and returns so you can spend more time taking care of your business. Specialise in all software packages, including excel.

I can provide the following services:

- \* Entering sales/purchase invoices
- \* Designing invoices and purchase orders
- \* Reconciling and submitting VAT returns
- \* Bank reconciliations
- \* Recording/paying staff expenses
- \* Accounting software training
- \* Credit control

Phone:

03330504496

Email:

[srtrautmanwork@gmail.com](mailto:srtrautmanwork@gmail.com)

Website:

[www.stephensbookkeeping.co.uk/](http://www.stephensbookkeeping.co.uk/)



## Tuesday Club

I really am keen to get started again following the lockdown but as much as I would like to give some positive news I realise that there are some who are still not happy to get out and about and mix with others. Additionally, and I sympathise with this myself, sitting for 2 hours in the hall with masks on will certainly not be fun, and clearly there are others who feel they cannot do this.

It is true that masks and social distancing do not lend themselves to the type of club we are running and with the possibility of low numbers I cannot see that we can re-start yet. It also has not gone without notice that as I write this the number of Coronavirus cases are again increasing.

I would like to have got going again in October but at present that does not seem practicable. Should government guidelines alter between now and then, and it is completely safe to meet, I will be in touch with you. Meanwhile please be patient and remember, should you have any problems please get in touch with me.

John Payne

**ST NICHOLAS HOSPICE CARE'S  
ANNUAL SPONSORED PYJAMA WALK**

TREATT

JAYNIC

ChassisCab

GREENE KING  
BURY ST EDMUNDS

SANOFI

BuryFreePress

COUNTRYSIDE  
Place People Love

Walk with us!  
**GIRLS NIGHT OUT**  
JAYNIC

**SATURDAY 12 SEPTEMBER**

There are a group of Lawshall ladies (not the Lawshall Ladies Group) are doing the Hospice virtual walk on Sept 12th. We are leaving Swan at 7pm walking the circular route through Coldham Hall and then finishing back at Swan. We would love the Lawshall residents to come out and clap us on! Just like the normal one. Sorry this is late but can you put something in the R&A please. We do have a JustGiving page, the link is on Lawshall Neighbourhood Facebook page.

## Golden Wood Bird Survey 2020 – Summary Report by Simon Haffenden

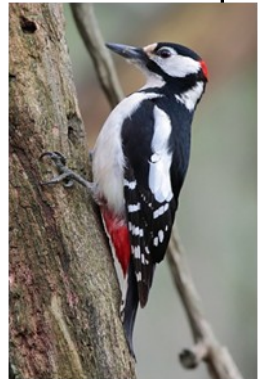
Since it was planted in the 1990s as Lawshall's second 'Forest for Our Children' woodland, Golden Wood has, thanks to Grenville Clarke's initiative, been the subject of a programme of regular surveys of its bird population. Due largely to Covid-19, this year's survey (the seventh of its kind) had to be based on a much smaller number of observations than previously. However, through the use of the same survey method (the British Trust for Ornithology's 'Common Bird Census') it was still possible to make a meaningful comparison with the results from previous surveys, to allow ongoing monitoring of trends.



**Comparison with previous survey (2017):** I'm glad to report the results of this year's survey indicate that most species recorded in Golden Wood are doing as well or better than in 2017. One particular highlight is the return of the garden warbler (last recorded in the 2010 survey). Two singing males were present from May onwards, one in each part of the wood.

Other species making a welcome return are the great-spotted woodpecker and coal tit, each of which had a probable territory in the older part of the wood, and the reed bunting and magpie, each with a possible territory in the newer part of the wood.

Other birds with a probable increase in numbers of territories since 2017 are the chiffchaff (+2), wren (+1), white-throat (+1), lesser whitethroat (+1), blue tit (+1) and long-tailed tit (+1). The only bird which was not recorded in this year's survey but which had a probable territory in 2017, is the bullfinch. However, just because it was not seen or heard during the survey doesn't mean that it wasn't there, and Cliff Cooper confirms that he's seen a pair of bullfinch in the wood this spring. Hopefully, and probably, there may be a few other species which were present in the wood, but which escaped the attention of this observer!



**Comparison to 2010 survey results:** shows an encouraging increase in probable numbers of territories in 13 species, with 6 species showing no change in numbers and only 3 species showing a slight decline. The total number of probable territories for all species in 2020 was a healthy 70, compared to 48 in 2010.

**Most successful species:** Repeating its 2017 record as the most successful bird in Golden Wood is the wren, with up to 9 territories this year. Next in the pecking order come the blackbird, robin, chiffchaff and blue tit, all with up to 7 territories. All of these birds can be found in both parts of the wood.



The newer part of the wood, with its younger trees and more open scrubland, is the area favoured by the yellowhammer, willow warbler, whitethroat, lesser whitethroat, and reed bunting.

All these species choose to nest on or close to the ground, and it's for this reason that the FOC steering group asked for all dogs to be kept on lead in this part of the wood during the breeding season (March until July). A big



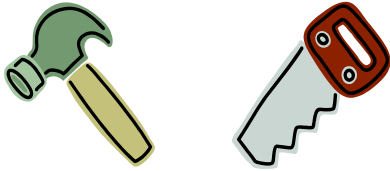
thank-you to all those who've respected this request, which hopefully has enabled all these species to thrive.



**Next year's survey:** is likely to be in Frithy Wood, with the next survey of Golden Wood due to take place in 2023.

Editors note: A birdsong identifier can be found at:  
<https://www.rspb.org.uk/birds-and-wildlife/bird-songs/what-bird-is-that/>

## JRB RENOVATIONS JESS BUCKSEY



- Property maintenance and repair
- Kitchens and Bathrooms
- Patio/Driveway
- Fencing
- Guttering etc
- Bespoke carpentry

[jrbucksey@yahoo.com](mailto:jrbucksey@yahoo.com)

Tel 01449 736968

Mob 07815 850452

## Rothwell's Carpet Cleaning

### Carpet Cleaning & Stone Floor, Upholstery, Rugs

*A few points that make us stand out,*

Rothwell's has been in business since 1993

We're an honest local family firm.

Our large truck mounted machines mean more cleaning & drying power for the best results possible.

Members of both the NCCA and TACCA.

We will move the furniture.

100% satisfaction or it's FREE.

*Call Oliver and Max Campbell  
for expert help today.*

**01638 428 060**

**www.Rothwells.biz**

## A1CARS

(SUFFOLK) LTD

24 hour Taxi, Executive and Coach Service

Reliability, punctuality, safety,  
comfortably and on time serving  
Bury St Edmunds and  
surrounding villages



**COACH & MINI BUS  
AIRPORT TRANSFERS  
EXECUTIVE SERVICES**

**T: 01284 766777**

**E: [book@a1cars.co.uk](mailto:book@a1cars.co.uk)**

**[www.a1cars.co.uk](http://www.a1cars.co.uk)**

# Lawshall All Saints Church



Following the Government announcement on 23rd June, The PCC are very pleased to be able to reopen All Saints Church for private prayer and funerals from 30th June. The guidance is under constant review and we will be guided by the Government on when we can allow services and small weddings.

Please see below a statement from the Bishop of London, via Church of England;

"The last three months have been an extraordinary time - the first period without public worship and the sacraments in England in more than 800 years. There will be real joy as we begin to come together again – if even at a physical distance – but I also know that many will be understandably cautious at this news.

"We will not be returning to normality overnight - this is the next step on a journey. We've been planning carefully, making detailed advice available for parishes to enable them to prepare to hold services when it is safe and practical to do so. It is important to say that the change in Government guidance is permissive, not prescriptive.

"I would particularly like to thank clergy and lay leaders for all they have done during the time our buildings have been closed. Not all church buildings will be ready to hold regular services from July 4th, but we are providing whatever support we can to enable them.

"There will still be restrictions and we must all still do everything we can to limit the spread of the virus to protect each other, especially the most vulnerable. The online services and dial-in worship offerings we have become used to will continue"

## **All Saints church building will be open on:**

**Tuesdays from 9.30am - 12.00**

**Fridays from 12.00 - 8.00pm**

We are very lucky to be able to open again, but we must adhere to strict guidelines laid out by the Church of England. We kindly ask that you follow the guidelines below which will be under constant review;

-Enter the church by the usual door and

Exit via the opposite door which will be clearly signed

-Hand Sanitiser will be available at the entrance and exit

-Please Leave the Doors Open

-Some areas of the church will remain out of bounds to the public.

Thank you for your understanding. We look forward to welcoming you back.



# Willows

*Residential Care Home*



The Willows is a friendly residential care home for elderly ladies and gentlemen and is part of the Extra friend group of care homes.

We are situated in the village of Lawshall which is about 6 miles south of Bury-St-Edmunds, Suffolk. Set in 2 acres of tranquil landscaped gardens and surrounded by countryside, The Willows (Originally a farmhouse) has been sympathetically and tastefully extended and refurbished and is now home to 25 residents.

Care Manager, Mrs Margaret Holt says that: "All clients are treated as individuals with dignity and respect and where client comfort and safety comes first".

If you would like further information on admission arrangements and fees, please contact our Care Home Manager on 01284-830665 who will be pleased to answer any questions and arrange a tour of our Home.

*You are welcome to visit Willows Residential Home to visit at your convenience.*

**Willows Residential Home**  
Corders Farm, Bury Road, Lawshall, Suffolk IP29 4PJ

**Telephone: 01284 830665**

**Fax: 01284 830892**

**Web: [www.extrafriend.co.uk](http://www.extrafriend.co.uk)**

**Email: [margaretholtuk@yahoo.co.uk](mailto:margaretholtuk@yahoo.co.uk)**

# Lawshall Weather Summary-July 2020

I am often asked how our Lawshall weather has changed over the last few years. With all the talk of 'Global Warming' I have decided to take an overview of the period **January to July** each year since 2013. This is taken from my recorded data and I leave you to draw your own conclusions as to the trends and changes in our village over the last seven years.

<b>Year</b>	<b>Daytime Average</b>	<b>Highest Temp.</b>	<b>Night-time Average</b>	<b>Rainfall Total mm</b>	<b>Additional Items</b>
<b>2013</b>	12.8	33.1	4.7	276	Jan-Apr Snow
<b>2014</b>	15.7	30.5	8.1	474	Very high Rain-
fall. <b>2015</b>	14.3	31.9	5.5	268	Feb-Jul Very low Rainfall
<b>2016</b>	11.6	31.4	6.8	423	March. Snow & Gales
<b>2017</b>	15.9	31.7	7.1	360	Feb. Cold & Gales
<b>2018</b>	15.9	36.5	7.6	282	Feb. Snow Mar. Cold & Storms. Apr. The wettest ever on record.
<b>2019</b>	16.1	37.0	7.6	284	Mar/Apr . High winds and storms. July saw the hottest day ever recorded in the UK
<b>2020</b>	16.6	33.0	7.7	62	Feb/Mar 4 official Met. Office storms. Apr. Long hot days. May was the warmest and driest month ever recorded.

*Malcolm Edgar*

# Richard Kemp

County Councillor  
01787 378149

*Sponsors:* **Adam Kemp** BA Hons  
DipPFS Cert.CII (MP&ER)  
AMAS Investments Ltd (Director)  
Please contact for free financial  
and mortgage advice 01284  
724013 opt7 07988 961240  
Adam.kemp@amas.co.com

**DK Domestic Appliances Ltd** ~ Your local independent retailer

Stocking New and Reconditioned Appliances.

Fast and Guaranteed repair service for all makes of domestic appliances.

- ▣ Washing machines
- ▣ Tumble Dryers
- ▣ Dishwashers
- ▣ Electric cookers
- ▣ Fridges/Freezers



Large showroom at Finbows Yard,  
Bacton. Stowmarket IP14 4NH

Open Mon-Fri 9-5, Sat 10-2

**Tel: 01449 780398**

**The CleanPlumber**   
experience the difference

**Installations, Service & Repairs  
Domestic & Commercial...**

- Oil and Gas Boilers and Systems
- Central Heating
- Power Flushing of Radiators
- Emergency Service
- Showers, Bathrooms, Tiling
- Property Maintenance

**A leaking tap to a brand new  
system – we can help you**

**Call us now on  
01284 765453**

[www.thecleanplumber.co.uk](http://www.thecleanplumber.co.uk)

**Anglia** DOMESTIC • COMMERCIAL • AGRICULTURAL

**PEST MANAGEMENT** 

insects✔ birds✔ moles✔ rabbits✔ rats✔

**Based in Lawshall**

**Contact Tim Cox on:**

**M 07776205346 T 01284 831042**

[info@angliapestmanagement.co.uk](mailto:info@angliapestmanagement.co.uk)

[www.angliapestmanagement.co.uk](http://www.angliapestmanagement.co.uk)

# USEFUL VILLAGE CONTACTS & INFORMATION

## Village Hall Management Committee

**Chairman:** rotation through committee

**Secretary:** Rosemary Riches. 830757 richesrosemary32@gmail.com

**Treasurer:** Karen Wilcox 830725 karenjwilcox265@gmail.com

**Caretaker & Booking Secretary:** Sharon Marshall 830182 shazy68@hotmail.co.uk

**Committee Members:** Ian Carrington 830497, Ian Copping 830430,  
John Chappell 830530, Julian Delefortrie 830544, Jenna Kitchen 830022

## Lawshall Parish Council [www.lawshall.suffolk.gov.uk/](http://www.lawshall.suffolk.gov.uk/)

**Chairman:** Andrew Irish 827500 **Vice-Chairman:** Trevor Elmer 830870

**Clerk:** Dorothy Griggs 830813 **Councillors:** Ray Debenham 07908 656098

David Griggs 830813 David Page 830968

Laura Williams 828477 Karen Whordley 830316

**District Cllrs :** Stephen Plumb. email: Stephen.Plumb@babergh.gov.uk and  
Michael Holt. email: Michael.Holt@babergh.gov.uk

**County Cllr :Richard Kemp 01787 378149**

## Neighbourhood Watch Co-ordinator **Mrs Pamela Pope 830716**

**Contacts:** Ros Debenham 830640 Dorothy Griggs 830813

## Village Clubs and Organisations—held in the Village Hall

Lawshall & District Carpet Bowls: every 2nd and 4th Mon 2-4pm ; info 830693

Tuesday Club: 2-4pm every week, info John Payne 830466

Lawshall Ladies : 2nd Weds of month, 7.30pm

Table Tennis last Friday of month, Contact Julian on 830544

**Not in VH:** Coldham Hall FC / Cricket - Contact Chris Toole; [loftytoole@yahoo.co.uk](mailto:loftytoole@yahoo.co.uk) or  
Ben Atkinson on 07921 837296 [www.hartestandcoldhamcc.blogspot.co.uk](http://www.hartestandcoldhamcc.blogspot.co.uk)

## Lawshall Postal Collections

Coldham, Mon-Fri 4pm, Sat 7.30am. The Glebe, Mon - Fri 4.30pm, Sat 11.30am.

Lams Lane/Rectory Corner, Mon - Fri 9am; Sat 7am

Donkey Lane, Mon-Fri 4pm, Sat 11am. School/The Street, Mon-Fri 4.30pm; Sat 11.30am.

NO Sunday collections.

## **Chambers Bus Times route 375 ~ Lawshall to Bury: Alternate Weds June 10th on**

From Sudbury bus stn 09.30, Lawshall School 10.12, arriving BSE Bus stn 10.39

Return from Bury Bus Stn 13.00, arr Lawshall school 13.27, Sudbury bus stn 14.10

## **Felix Sudbury Bus Timetable (Thursday only)**

Leaving The Street at 9.40am & return trip leaving Sudbury bus station at 12.45pm.

**Library Van** Email: [help@suffolklibraries.co.uk](mailto:help@suffolklibraries.co.uk) Tel 01473 351249

**Route 7:** Thursday 24 Sept, 22 Oct, 19 Nov, 17 Dec: Free Church 9.50 ~ 10.20am,  
Swanfields 10.25am ~ 10.40am & Village Hall car park 10.45am ~ 11.25am.

**Route 10:** Melons Green, Tuesdays 1 Sept, 29 Sept, 27 Oct, 24 Nov, 22 Dec: 12.50-1.05

## **Refuse Collection**

Early every Monday or Friday morning alternating weekly with blue bin & black bin  
(Tuesday/Saturday morning collection in week following a bank holiday).

## HANDY LOCAL NUMBERS

All Saints' Primary School 828223 \* Pre-School 827588

All Saints' Church Revd Jeremy Parsons 846166

Catholic Church 01284 754358 \* Free Church, Paul Mitchell 828694

Village Hall Lottery Co-ordinator: John Chappell 830530

Local History Recorder, Lawshall Archives Group: Elizabeth Clarke 827275

Willows Residential Care Home 830665

Green Light Trust Office 830829 \*

Lawshall Community Woodlands - Forest For Our Children - Debbie Thomas 827470

The Swan Public House 828477

Newspaper delivery - Sicklesmere Stores Ltd 01284 386303

Excelan Chauffeur Services 01284 789503 / 07816 663 542

A1 Cars 24 hr Taxi 01284 766777

Greenline Travel 07754 298690

Traveline 0871 200 22 33

Anglian Water emergencies / enquiries 0845 7145145

UK Power Networks Emergency number: 105

EDF Electricity emergencies 0800 7838838

Babergh District Council Helpline 0300 123 4000

Suffolk County Council 0345 606 6067

**Police:** Bury Police Station 774100

Crime Stoppers 0800 555111

Police HQ main switchboard (non-emergency) 01473 613500

contact baberghwest.snt@suffolk.pnn.police.uk Tel 101 or 999 for emergency

Suffolk Fire Service 01473 260588 e-mail : fire.admin@suffolk.gov.uk

Citizens Advice Bureau 01284 753675

Samaritans 116123 (Freephone)

Bury Train Station Customer Service 0845 600 7245

BBC Radio Suffolk 0800 1412121

Tourist Information 01284 764667

Bury Leisure Centre 01284 753496

Bury Library 01284 732255

**Local Doctors:** Glemsford Practice 01787 280484

Long Melford Practice 01787 378226

Mount Farm Surgery, Moreton Hall, Bury 01284 769643

NHS Direct 111 for urgent (non-emergency ) medical help

West Suffolk Hospital switchboard 713000, A & E 713333

St Nicholas' Hospice 766133. Patients' Line 725700

**Local Vets:** Swayne & Partners (BSE) 701444, (Melford) 01787 370773

Eastgate Vet Group (BSE) 753961

Moreton Hall (BSE) Vets 747000