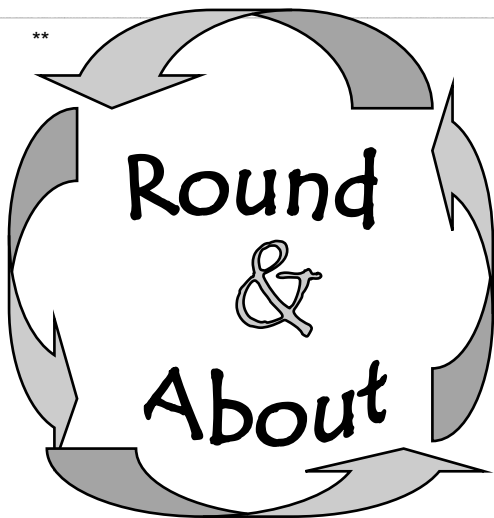


**



LAWSHALL



August 2018

www.lawshallvillagehall.co.uk

This magazine is published by

Lawshall Village Hall Management Committee.

We reserve the right to edit, shorten or refuse any item submitted for publication and cannot be held responsible for the accuracy of any claims made by advertisers.

Copy deadline for September 2018 magazine

6pm Sunday 19th August - earlier welcome!

**Copy should be emailed to the editor, Jenna Kitchen at
jennalight51@btinternet.com Telephone 01284 830022**

or delivered to Country Lodge, Lambs Lane, Lawshall

(first house on the left, across the crossroads when going from direction of village hall)

To place an advertisement in this magazine

please contact Dave Henderson at david.henderson8789@gmail.com
or at Pantile Cottage, The Street, Lawshall Telephone 01284 828156

Black and White Adverts

Quarter page £6 per issue

Half page £10 per issue

Full page £20 per issue

Back cover £30 per issue

Buy 12 months advertising in advance

& receive a 10% discount.

Wanted / For Sale - £2 per entry; Lost or Found items - Free of charge

Check out our website at <http://www.lawshallvillagehall.co.uk>

To discuss anything about the website

please contact Jenna Kitchen on 01284 830022

The proceeds from this magazine will go towards the refurbishment and improvement of Lawshall Village Hall, registered charity number 304911

VILLAGE HALL HIRE CHARGES

Lawshall residents... £14 per hour Other users..... £17 per hour

Charges for Groups regularly using the hall are:

Weekly users.. £11 per hour

Monthly users.. £14 /hour (+ 10% reduction if paid 3 months in advance)

Bi-monthly users. £14 /hr (+5% reduction if paid 3 months in advance)

There are new set fees for children's parties available upon request.

Editorial: Let's hope August will bring some rain and coolness for a little while at least. There are some events coming up at the end of the month. Meanwhile please take good care in the heat. Jenna, Editor

Tips for coping in hot weather

- Shut windows and pull down the shades when it is hotter outside. You can open the windows for ventilation when it is cooler.
- Avoid the heat: stay out of the sun and don't go out between 11am and 3pm (the hottest part of the day) if you're vulnerable to the effects of heat.
- Keep rooms cool by using shades or reflective material outside the windows. If this isn't possible, use light-coloured curtains and keep them closed (metallic blinds and dark curtains can make the room hotter).
- Have cool baths or showers, and splash yourself with cool water.
- Drink cold drinks regularly, such as water and diluted fruit juice. Avoid excess alcohol, caffeine (tea, coffee and cola) or drinks high in sugar.
- Listen to alerts on the radio, TV and social media about keeping cool.
- Plan ahead to make sure you have enough supplies, such as food, water and any medications you need.
- Identify the coolest room in the house so you know where to go to keep cool.
- Wear loose, cool clothing, and a hat and sunglasses if you go outdoors.
- Check up on friends, relatives and neighbours who may be less able to look after themselves.

Further information: <https://www.nhs.uk/live-well/healthy-body/heatwave-how-to-cope-in-hot-weather/>

Contents:

5	What's On	21	Women's Institute
7	Village Hall News	23	Tuesday Club
9	Parish Council	25	Community Woodlands
11	Village Show	27	VH Lottery application
13	Bird Notes	29	Treasure Island
15	Paws with a Cause—EAAA	31	Lawshall Treasure Quiz.
17	Garden Club	33	Weather Report.
19	Vandalism in Lawshall	20	VH Lottery Draw results

graphic design that means business!



Great graphic design has the ability to grab attention, capture imagination & encourage you to make a buying decision. Whether you need a new corporate identity, a revitalised brochure, or a compelling exhibition graphic our creative designers will deliver the goods. For graphic design that means business call Kall Kwik now & see what we can do to help you grow.

Kall Kwik Bury St Edmunds, Burnidge House, Brunel Business Court,
Eastern Way, Bury St Edmunds, Suffolk IP32 7AJ
t 01284 752266 f 01284 330350
sales@kallkwikburystedmunds.co.uk • www.kallkwikburystedmunds.co.uk

kallkwik®
business design + print



The Swan Inn Lawshall

www.swaninnlawshall.com

Check out our new
Website
And Menus

We have vegan, vegetarian
and gluten free options

Come and enjoy summer in the
garden of the Swan Inn

Please book for food - call :
01284 828477

COCKFIELD COMMUNITY CINEMA : The Post 12A



The Post
Based On True Events
January 19 - Book Now



**Friday 24th
August 2018**

**Cockfield
Village Hall**

**Doors Open: 7pm
Film starts: 7:30pm**

Tickets on the door

**Adults: £4.50 /
Under 16s: £3.00
Raffle,**

**Refreshments &
Licensed Bar
available from 7pm**

What's On in Lawshall in August 2018

Tuesday Club 2-4 pm in Village Hall

Table Tennis Dates Fridays: August 31st, October 26th, November 30th

Tuesday 14th **Parish Council meeting** 7.30pm

All Welcome. Note one time change from 2nd Tuesday

Wednesday 15th **Women's Institute: No Meeting in August**

Saturday – Sunday 25th-26th **Lawshall Treasure Quiz** see page 31

Sunday 26th August **Treasure Island** at the Swan Inn 4.30pm see p 29

Friday 31st **Cockfield Community Cinema: The Post 12A** see p4

Sunday 26th **Community Woodlands** management morning. 9.30-12.30
Come and join in! see page 19

In the coming months:

Monday 3rd September **Village Hall Management Committee** 7.30pm

Sunday 9th September

Village Flower and Produce Show

in All Saints church see p 11

Sunday 9th December **Christmas Tree Festival** in All Saints church



**LOOKING TO SELL OR JUST CURIOUS
TO KNOW HOW MUCH YOUR
HOME IS WORTH?**

For a valuation telephone 01284 755552
or email sales@richardgreen.uk.com

*All valuations are treated in the strictest confidence and
are without charge or obligation*

RG

RICHARD GREEN
UK.COM



LAWSHALL VILLAGE HALL

– open for you

www.lawshallvillagehall.co.uk

You can view or download a copy of R&A. From the website.

The Village Hall Management Committee will now be holding it's formal meetings quarterly. Dave Henderson will chair these meetings.

The next scheduled meeting is on

Monday 3rd September

Apply for Lottery on page 27.

Many thanks to all those who have



enabled the hanging baskets and planters to look so beautiful this year.

Check out these photos in colour by accessing Round & About from the website.

GREENLINE TRAVEL

Tel: 07754 298690

Email: greenlinetravel@live.co.uk

24 hour 7 days a week service to & from airports, ports and local area.

Please call us for a competitive quote.
Service includes from and to:

Stansted £58.00

Gatwick £115.00



Heathrow
£110 .00

All Sea Ports
Luton £80.00
London City

HAIR BY GEORGIA



Mobile Hairdresser

Available

Daytime

or evenings

Competitive prices

Contact

Mobile 07741000208

Home 01284 735414



Ground Work & Plant Hire

Mini Digger & Driver for Hire

Driveways & Pathways

Drainage Work

Footings & Over-sites

Garden & Site Clearance

C S CONTRACTORS

**108 Horringer Road
Bury St Edmunds IP33 2DP**

01284 724048

Mobile 07720 843577

Kevin Seggie

Electrical Services

Bury Road, Lawshall

Your local electrician

Established 20 years

Tel: 01284 830786

Mobile: 07768 108157

E-mail: cudbatey@yahoo.co.uk

Part P Competent Person

Qualified to 17th Edition Regulations

ECA Member * 24 Hour Service

Testing & Inspection

Portable Appliance Testing for

Insurance Purposes

Burglar alarms supplied and fitted

All electrical works undertaken

Vacancy for Councillor: If you are interested in becoming a Councillor please contact the Clerk.

New gate at Walcher's meadow: The Councillors would like to thank Ccldr. R. Kemp for the £300 received from his S.C.C. Locality Budget to help finance this project.

Dog fouling: My we remind all dog walkers to please clear up after their dogs and to also remind you that it is a punishable offence.

Crime report: Updated on the Police website May 2018: no new reports for Lawshall.

Dorothy Griggs parish Clerk 01284 830813

~~~~~

## KEEP LAWSHALL TIDY

It has been good to welcome some new members to our litter picking team last month and I am very grateful for their involvement.

I have fluorescent jackets and large black bin bags for anyone else that cares to join us.

I still have a couple of names of people on a list given to me by Paula. I would be grateful if you could contact me and let me know the roads you are covering so that we do not duplicate and waste time.

Last Sunday morning I picked up a GB Badge that probably fell off the rear of a vintage motor car. If you have lost one. please contact me and I will gladly return it to you.

Should you notice a build up of litter anywhere in the village please let me know.

John Payne 830466



# **WATERSON**

## **Plumbing & Heating**

***All Domestic Plumbing Work Undertaken***

***Full Bathroom Installation and Tiling Service***

***Oil Appliance Commissioning, Servicing, Repair / Replacement***

***Domestic & Non-domestic Oil Storage and Supply Installation***

***Central Heating Installations***

***Unvented Cylinders Installed***

***References Available on Request***

**OFTEC Registered Technician No. 28970**

**Home 01359 760528    Mobile: 07828639138** Email: Jer-

emy@watersonplumbing.com

Website: watersonplumbing.com



**Milner Rd Chilton Ind. Est. Sudbury Suffolk CO10 2XG**

**Tel: 01787 375023**

**www.suffolkfarmfencing.co.uk**

- **Garden Fencing** ■ **Dog Fencing**
- **Post & Rail Fencing** ■ **Wire Netting**
- **PVC Coated Mesh** ■ **Round & Square Posts**
- **Mini Sleepers** - **Railway Sleepers**



# Village Show

@

## Lawshall Church

**SEPTEMBER 9th 2018**

**Show opens 2.00pm**

**Prize Giving 4.00pm**

**Rules:-**

Entries will only be received between 8am and 10 am on the day of the Show  
Entries to be left on display until after prize giving

Age to be shown on exhibits in the Children's classes, there is a cash prize  
for 1st ,2nd, and 3rd prize winners in these classes

Exhibits must be identified with the cards provided

**Exhibitors can only enter one exhibit in any class**

NB. Whilst every care will be taken, the organisers will not hold themselves  
responsible for loss or damage to exhibits

**Free entry in all classes**  
**Entries close at 10am on the day**



# The Long Melford Practice

New website address: <http://www.mysurgerywebsite.co.uk/ppg.aspx?p=D83014>

Tel 01787 378226

## Long Melford

### Opening Hours:

Weekdays 8.00 a.m. – 6.30 p.m

### Address:

Cordell Road  
Long Melford  
Sudbury CO10 9EP

## Lavenham

### Opening Hours:

Weekdays: 8.30 a.m. – 1.00 p.m.  
2.00 p.m.—6.30 p.m

### Address:

36 Church Street  
Lavenham  
Sudbury CO10 9SA

The Long Melford Practice has had a new telephone system installed. All calls to the surgery may now be recorded for training and quality purposes.

We are celebrating 70 year of the NHS on the **5<sup>th</sup> July** with a tea party between 10 am and 12 midday at Long Melford provided by the Patient Participation Group. All are welcome

Similarly at the Lavenham surgery on 5<sup>th</sup> July between 2.00 and 4.00pm

**David Gillard**

## Professional Painter & Decorator



Competitive rates \* No Job too small \*  
Free Estimates \* Professional finish

Tel: 01284 756513

Mobile 07885 101051

**The CleanPlumber**  
experience the difference



### Installations, Service & Repairs Domestic & Commercial...

- Oil and Gas Boilers and Systems
- Central Heating
- Power Flushing of Radiators
- Emergency Service
- Showers, Bathrooms, Tiling
- Property Maintenance

**A leaking tap to a brand new  
system – we can help you**

Call us now on  
**01284 765453**

[www.thecleanplumber.co.uk](http://www.thecleanplumber.co.uk)



## Bird Notes August 2018 by Cliff Cooper

All the hot, dry weather in June and July has been really good for the birds- as long as they have had access to water! For example, only a very few house martins arrived here this spring, yet I am now seeing over a dozen regularly searching out the insect food over our houses. Early in the morning I sometimes get to see them down on the ground in the field behind us, presumably sucking up the overnight dew before the sun burns it all away. Unfortunately they have still shown no interest whatsoever in our artificial nests- perhaps they will check them out before they leave us for the winter.



The local swifts have also done well this year although I still cannot discover where they are nesting.

This theme of abundance is also in evidence in the fields around us and also in Golden wood, where at least one willow warbler has stayed singing, so I hope he has had a female on a nest somewhere in the “new” part of the wood.

The butterflies have been much more prolific this year following last year’s very poor showing. The fields and woods have been teeming with meadow browns, ringlets, and later the gatekeepers have emerged. We even had a white letter hairstreak (quite a rare little butterfly reliant on elm trees) inside on our kitchen window!

A nice place for a peaceful walk is Clare Country Park. Parking is easy, although there is a pay and display machine. We took the old railway trail and saw lots of birds and butterflies, before returning to the lovely café for a well-earned coffee.

I have received a couple of calls recently from locals who had birds nearby that they were unable to identify. On both occasions I was also unsuccessful in identification- I couldn’t actually locate the bird in question in either case, but I am still very willing to try to help anyone who has a bird they cannot put a name to.

# F. CLUTTERHAM & SON

FUNERAL DIRECTORS & MEMORIAL CONSULTANTS  
ESTABLISHED 1919



- ◆ At your service 24 hours a day
- ◆ Private Chapel of Rest
- ◆ Floral Tributes and Memorials
- ◆ Pre-Paid Funeral Plans available
- ◆ Funeral pricing options to suit all needs
- ◆ Help and guidance through every step by our fully qualified Funeral Director

**TEL: 01284 754349**

23, MUSTOW STREET,

BURY ST. EDMUNDS IP33 1XL

Part of Dignity Ltd—A British owned Company



## Wayne Mills Construction

We are a small building company with 35 years experience in the trade covering all aspects of building including extensions, alterations & renovations.

*We specialize in older properties & all the trades have minimum of 35 years experience each. We are happy to do small jobs ~ garden walls, bathrooms & kitchens up to complete house renovations & extensions.*

**01787 828808**

**07780 546527**

## Swayne and Partners Veterinary Surgeons



**Providing 24 hour  
veterinary care  
across West Suffolk**

**Bury St Edmunds 01284 701444**

**Haverhill 01440 702007**

**Long Melford 01787 370773**

**Newmarket 01638 662253**

## Paws with a Cause is back for its 4th year!

On the 30th September 2018 Glemham Hall once again open their doors and invite you to join East Anglian Air Ambulance on a dog walk through the beautiful grounds and surrounding area of the estate.

We are grateful to Ufford Park, Woodbridge for their kind sponsorship of this event.

Walks take place from 10.00 and finish at 3pm (last dogs to walk at 1pm).

Only £5 per person – irrespective of 2 or 4 legs.

Why not enjoy a bacon butty and a hot drink before your walk and a freshly cooked burger or hot dog afterwards from Beefed Up Catering. Or treat yourself to a glass of prosecco, wine, beer or a soft drink from The Stable Arms.

Enjoy the regular agility display from Paws of Parham – perhaps your dog would like to test their agility?

Sign up today! We look forward to seeing you and your four-legged friends there.



**Sunday  
30  
September  
2018**

**10am - walks finish 3pm**

Glemham Hall  
Woodbridge, Suffolk, IP13 0BT

To register please visit: [www.eaaa.org.uk](http://www.eaaa.org.uk) or [www.eventbrite.co.uk](http://www.eventbrite.co.uk)

For more information please visit our website or contact:  
[vicki.george@eaaa.org.uk](mailto:vicki.george@eaaa.org.uk)

# Bury Bathroom, Kitchen & Tile Centre



- Bathrooms** - Contemporary and Traditional
  - Kitchens** - Fully Assembled
  - Worktops** - Inc Solid Surfaces and Granites
  - Tiles** - Wall and Floor
  - Bedrooms** - Fitted Furniture
- Supply Only or Fitting Service available**

**Fantastic Products, Great Service,**



**Visit the showroom**  
**Weekdays** 9:00 – 17:00  
**Saturday** 9:00 – 13:00  
**Sundays** Closed

**01284 762190**



**7 Enterprise Park, Etna Road, Bury St Edmunds, IP33 1JZ**

**sales@burybathroomcentre.co.uk**

**Firewood Logs:** £5 per bag or truckload of 1.25cubic metres £80



Larger loads available. Out of season and unseasoned firewood at a discount. Call for details. Free delivery within 5 miles of Lawshall

**Digger Hire:** Driveways, paths and flowerbeds.

Ponds dug or cleared. Grass cutting. Paddock maintenance.

Groundwork & footings. **Ray Debenham, Coopers Farm, Lawshall. Tel 07908 656098**

**01284 830262 raydebenham@hotmail.com**



## Cycle Centre and Country Cafe

For all your cycling needs

including repairs;

Plus coffee , cakes, breakfast,

elevenes and lunches

Open seven days a week from 9am

Metcalfe Arms, Hawstead 01284 386884 [www.magliarosso.co.uk](http://www.magliarosso.co.uk)



## LAWSHALL GARDEN CLUB July 2018



It's late afternoon on the 16<sup>th</sup> July as I sit here and write this. The sun is blazing outside and my lawn is parched and brown. Lawshall has seen no significant rain since April. We all love the sunny days but gardening becomes difficult. I can only suggest the following to help you through this drought as there seems to be no end in sight at the moment.

Water, Water, Water. Not ideal for those of us with meters but if you want to keep your plants thriving, you must water and feed them. Especially pots, baskets, veg and fruit. Roses also need a good supply of water and feed to keep them healthy as they can be expensive to replace.

Don't worry about lawns. They don't need to be watered. They will not die. They just sleep through this dry weather and will return with vigour once the rain returns. Keep deadheading your annuals, roses, dahlias and other flowering plants and they should be OK.

Prune back your gooseberry, redcurrant and blackcurrant bushes in August once all fruit has been picked. Also summer prune cordon trained apple trees and fan trained fruit trees. August is time for harvesting blackberries, loganberries, peaches and the last of the summer raspberries.

Ventilate and damp down your greenhouse in this hot weather and increase feeding of your tomatoes, pinching out the side-shoots. Also remove lower leaves from the tomatoes.

Elsewhere you should look to feed Camellias and rhododendrons, watering well. Clip dwarf hedges such as Lavender and Rosemary.

Again I could go on for ages with a list of things to do in the garden but the general rule is that you should just do what you are able to do and don't make gardening a chore. The current weather doesn't help but you can only do what you can. I hope in the future to start concentrating on specific tasks for you to try including propagation techniques and taking cuttings from plants at the right time. If there is something in particular you would like me to cover, give me a call on the below number or come along to one of our garden club meetings for a chat. Dates and times available from me.

Happy gardening

Dave Henderson 07783 076332

## SICKLESMERE STORES AND POST OFFICE

Open Mon-Fri 7am-5.30pm

Saturday 7am-12 noon

Sunday 9am-12 noon (shop only)

Parking available for customers during shop opening hours

- HOME DELIVERY OF NEWSPAPERS AND MAGAZINES 7 DAYS PER WEEK INCLUDING BANK HOLIDAYS (EXCLUDES CHRISTMAS DAY)
- CASH WITHDRAWALS, BILL PAYMENTS,
- CAR TAX, MOBILE TOP-UPS, ELECTRIC KEY PAYMENTS,
- MOST POST OFFICE SERVICES OFFERED



LOTTERY, OFF LICENCE, TOBACCO

LOGS, COAL, KINDLING, HOTTIES AND SALT

TAKEAWAY HOT DRINKS, ICE CREAMS, SANDWICHES, SNACKS & MORE

\* AGENTS for DRY CLEANING, ALTERATIONS and REPAIRS \*\* New \*\*

\*\* NOW SELLING LOCAL HONEY FROM WHEPSTEAD \*\* New \*\*

CONTACT US ON 01284 386303 DURING OPENING HOURS

### **Excelan Chauffeur Services**

01284789503 & 07816663542

[www.excelan.co.uk](http://www.excelan.co.uk)

Quality and affordable travel service

Vehicles include the BMW, Audi & Mercedes Benz

Airport Transfers \* Seaports \* Euro Star Terminals

\* Weddings \* Bespoke journeys

Lawshall to Stansted £70 \* Heath-

row £120 \* Luton £90.

London £125.

Credit & debit cards are free of transaction charges.

Licensed by St. Edmundsbury

Council & enhanced criminal

records bureau check

*Excelan*  
*chauffeur services*





## Vandalism comes to Lawshall

Was someone so desperate to get to a book that they could not open the door but just smashed all the glass instead?

The Book Swap Shop used by many in the village was found in this state by Elizabeth and Lucy who keep an eye and tidy it up regularly.

There was glass all over the floor and on the shelves among the books. It is disappointing that someone has wreaked such destruction, not caring about the effect or expense of clearing up or securing or repairs.

We hope the book swap shop  
Will continue to be used and  
enjoyed by many in the  
village—it is a great way  
to recycle / reuse books.



## Monthly Village Hall Draw Results

### – July Draw Prize Winners:

First Prize £50 – 82 Sue Brouder

Second Prize £20 – 297 Lucy Kent

Third Prize £10 – 114 Mr Bartholomew

Fourth Prize £10 – 410 Julian Delefortrie

Fifth Prize £10 – 85 Jenna Kitchen

If **you** would like to support your Village Hall lottery please complete the form on **page 27** and contact John Chappell on 01284 830530 or download the form from the village hall website at

**<http://lawshallvillagehall.co.uk/lottery-2/>**

You can also use this form to set up a regular donation to support your village hall.



# BLUEBELL BUILDING NOW OPEN

We believe in a fun and active path for early years education, allowing the children in our care to develop at their own pace, in a safe environment with activities they love.

We are located within the grounds of All Saints' Primary School in Lawshall, Suffolk.

Our mission is to help each child make the transition from preschool to reception and onwards into the main school with confidence and ease.

Accepting children from the term after their 2nd Birthday.

## Full day sessions available 8:30 – 3:30

[www.lawshallpreschool.co.uk](http://www.lawshallpreschool.co.uk) | 01284 827588 | [lawshallpreschool@hotmail.co.uk](mailto:lawshallpreschool@hotmail.co.uk)





theWI  
INSPIRING WOMEN

## Lawshall WI

Oh dear... was that bad planning, to have a WI meeting on the night that England were playing in the semi final of the world cup ? Well the numbers were down but still a good few of us had a wonderful strawberry tea with Pimms or Prosecco in the most beautiful garden belonging to one of our own members. I would miss football any time for that, especially as it was the perfect summer evening with warm sunshine and very good company.

We don't have a meeting in August but will be back....

Our next meeting will be on **12<sup>th</sup> September** at 7.30pm at Lawshall village hall. Our guest is Oggie Wheldon who is a Couture Milliner. Oggie will be showing us her hats and share secrets of the trade no doubt she will also be giving us a practical presentation. If you wish to join us we will make you very welcome.

Entry fee £4.

There will also be a raffle and the usual WI refreshments.

For more information please look at our website on [www.thewi.org.uk/Lawshall](http://www.thewi.org.uk/Lawshall)



# Village Hall Booking: Weddings? Summer Parties?



Plan your events now!

## Very Good Value Hiring Charges:

£14per hour for Lawshall Residents:

£17 per hour for non residents (2018 prices)

- \*All day hire and small meeting rooms by arrangement
- \*Large Main Hall - 15m by 9m with stage and high ceiling
- \*Jubilee Room 8m by 4m with hatch to kitchen
- \*Outside Lawn suitable for large marquee;
- \*Good sized parking area.
- \* Full kitchen facilities with new crockery in 2014
- 10% discount for regular hirers paying in full in advance

*Please contact booking secretary:*

**Sharon Marshall** on 01284 830182 email: shazy68@hotmail.co.uk

## Chimney Matters

Town and Country



**Professional Chimney Sweeping &  
Stove Installation**

- Open fires, Wood burners swept & serviced for maximum efficiency
- Wood & Multi-fuel Stoves fitted
- Certificates issued and fully insured
- Cowls & Bird Guards supplied & fitted



Mobile : 07767 864127

Phone: 01284 789663

[www.chimneymatters.co.uk](http://www.chimneymatters.co.uk)

## DKC PLUMBING SERVICES

Oil fired boilers: services and repairs.

Breakdowns and upgrades.

Oil tank installations.

Heating Systems.

Outside taps installations.

Bathroom upgrades and repairs.

Fitting or replacing Radiators.

Pipe work extensions, repairs.

General plumbing.

24h call out.

Fully insured.

5star plumber by ratedpeople

Contact David on:  
07740272791.

## **Tuesday Club**

I have to start my report on a sad note this month as our dear friend Maureen Woods passed away following a short illness. A number of us were able to attend her funeral on 18th July at the Catholic church in Bury Road. Maureen, one of our regulars, will be sadly missed as she always brought humour to our meetings and outings. As a group we offer our condolences to her family.

Iris, who has had great difficulties over the past months, has now entered a residential home away from Lawshall.

On a positive note we have welcomed new members over the past weeks and that has been very encouraging.

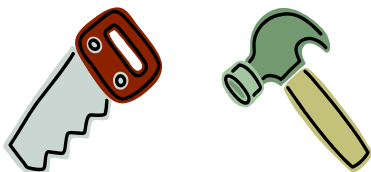
As I write this we are looking forward to our outing on 25th July to the Suffolk Punch Trust in Hollesley where we are having a guided tour and a ride on wagons pulled by the beautiful horses followed by lunch.

Of course this month we have our famous annual BBQ with plenty of meats and a wide variety of desserts.

If this whets your appetite why not come along to the Village Hall at 2pm on Tuesday afternoons, you will be most welcome.

John

## JRB RENOVATIONS JESS BUCKSEY



- Property maintenance and repair
- Kitchens and Bathrooms
- Patio/Driveway
- Fencing
- Guttering etc
- Bespoke carpentry

[jrbucksey@yahoo.com](mailto:jrbucksey@yahoo.com)

Tel 01449 736968

Mob 07815 850452

## Rothwell's Carpet Cleaning

### Carpet Cleaning & Stone Floor, Upholstery, Rugs

*A few points that make us stand out,*

Rothwell's has been in business since 1993

We're an honest local family firm.

Our large truck mounted machines mean more cleaning & drying power for the best results possible.

Members of both the NCCA and TACCA.

We will move the furniture.

100% satisfaction or it's FREE.

*Call Oliver and Max Campbell  
for expert help today.*

**01638 428 060**

**www.Rothwells.biz**

## A1CARS

(SUFFOLK) LTD

24 hour Taxi, Executive and Coach Service

Reliability, punctuality, safety,  
comfortably and on time serving  
Bury St Edmunds and  
surrounding villages



**COACH & MINI BUS  
AIRPORT TRANSFERS  
EXECUTIVE SERVICES**

**T: 01284 766777**

**E: [book@a1cars.co.uk](mailto:book@a1cars.co.uk)**

**[www.a1cars.co.uk](http://www.a1cars.co.uk)**



## Lawshall Community Woodlands

### A Forest for Our Children

Our next volunteer morning will be...

**Sunday 26<sup>th</sup> August, 9:30-12:30, Crooked Wood, Bury Road**

Golden Wood isn't the only community woodland in Lawshall. Crooked Wood was the first woodland set up by FOC and occupies a beautiful patch past the end of Lawshall Green. Once a year our volunteer mornings take place in Crooked Wood. Come and help us manage the rides and mark out some trees for coppicing!

As part of our 25<sup>th</sup> Anniversary celebrations, artist Lucy Bell ran a woodland art competition. All of the wonderful pictures of the woods were exhibited in the Foundry and the winning prize was awarded to Isla Mapston. Her picture now graces our special anniversary mugs, available to buy for £5.



If you'd like to join our mailing list, just email [themcclellands1@gmail.com](mailto:themcclellands1@gmail.com)

To find out more visit our website: [www.forestforourchildren.onesuffolk.net](http://www.forestforourchildren.onesuffolk.net)  
or check us out on Facebook: Lawshall Community Woodlands

# Catholic Church of Our Lady Immaculate & St Joseph

Diocese of East Anglia. Registered Charity no 278742

The oldest Catholic mission in Suffolk



**Coldham Cottage**, Bury Road, Lawshall, IP29 4PL

OS ref: TL 85690 55910

Tel: 01284 830393

Email: [church01@quikmail.co.uk](mailto:church01@quikmail.co.uk)

**Reverend Gerard Quigley**

Priest in charge

## **Mass Times**

Sunday Mass 10.30am

Tuesdays 09.30am

Fridays 10.15am

Holy Days of Obligation 7pm



# Lawshall Village Hall Lottery

## Bank Standing Order Request Form

(delete options where necessary)

To.....Bank plc. Branch.....

Address.....

.....Post Code.....

Title of Account.....

Sort Code ...../...../..... Account No.....

Please pay the sum of £.....in words .....pounds  
Annually / Monthly

Starting on ..... / ..... / .....until further notice in writing from me/us

To the credit of: Village Hall Management Committee Lottery Account  
Sort Code: 20-16-12  
Account No: 43282163

I wish to become a supporter of Lawshall Village Hall Lottery and give permission for my contact details to be kept by the Village Hall Management Committee solely for the purposes of administering the Lottery. Winners' names are published in the Village Round & About Magazine. Bank account details will not be kept. Contact details will not be passed on to any other organisation.

Please debit our above account accordingly.

Signature(s) .....

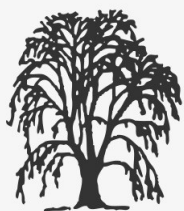
Name(s).....

Address.....

.....Post Code.....

**Please return this form to:**

**The Treasurer, Lawshall Village Hall Management Committee,  
47 The Glebe, Lawshall, Bury St Edmunds, IP29 4PN**



# *Willows*

## *Residential Care Home*



The Willows is a friendly residential care home for elderly ladies and gentlemen and is part of the Extra friend group of care homes.

We are situated in the village of Lawshall which is about 6 miles south of Bury-St-Edmunds, Suffolk. Set in 2 acres of tranquil landscaped gardens and surrounded by countryside, The Willows (Originally a farmhouse) has been sympathetically and tastefully extended and refurbished and is now home to 25 residents.

Care Manager, Mrs Margaret Holt says that: "All clients are treated as individuals with dignity and respect and where client comfort and safety comes first".

If you would like further information on admission arrangements and fees, please contact our Care Home Manager on **01284-830665** who will be pleased to answer any questions and arrange a tour of our Home.

***You are welcome to visit Willows Residential Home to visit at your convenience.***

**Willows Residential Home**  
**Corders Farm, Bury Road, Lawshall, Suffolk IP29 4PJ**

**Telephone: 01284 830665**

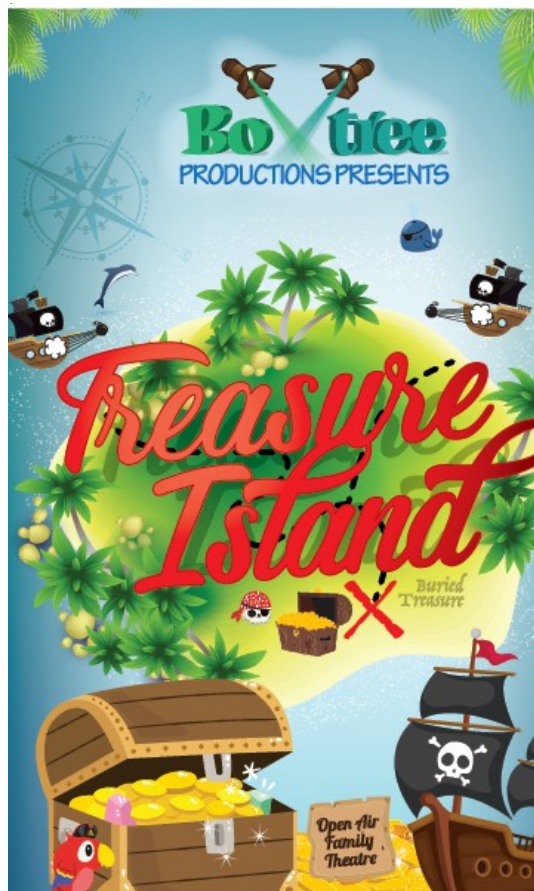
**Fax: 01284 830892**

**Web: [www.extrafriend.co.uk](http://www.extrafriend.co.uk)**

**Email: [margaretholtuk@yahoo.co.uk](mailto:margaretholtuk@yahoo.co.uk)**



Treasure Island  
at The Swan Inn  
26th August 4.30pm



Sunday 26th August 2018  
4:30pm

**THE SWAN INN**

Lawshall, Bury St Edmunds IP29 4QA

When Jim Hawkins discovers a treasure map amongst the possessions of the late 'Captain' Billy Bones, it hurtles him in to a cat and mouse game with dangerous pirates, taking him across the World to 'Treasure Island'.

Will Jim find the treasure?

Will he make it back to England?

And should he trust the mysterious ship's cook,

Long John Silver?

With inventive staging, original songs and magical storytelling we invite audiences to enjoy this classic tale of adventure, treasure and, of course, rum, in Boxtree Production's unique and energetic way!

Bring a picnic and a blanket or a low backed chair and soak up the atmosphere of a memorable night of open air family theatre.

Only alcohol purchased on site can be consumed, food will be available.

**Tickets:**

Adult: £14.50

Child (under 16): £10

Family (2 Adults & 2 Children): £41

Tickets can be booked via:

[www.boxtreeproductions.co.uk](http://www.boxtreeproductions.co.uk)

or in the pub.

There is no booking fee!

You can follow us:



BoxtreeProductions  
@BoxtreeProds

The show will go on regardless of the weather,  
cancellation only in the event of dangerous conditions.

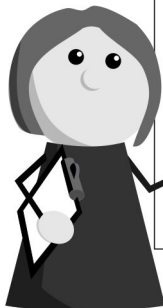
# TIME FOR YOU

## DOMESTIC CLEANING

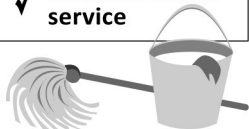
Typically

**£12.00**

per hour



- ✓ Cleaning over 400 homes for 10 years
- ✓ Same reliable weekly cleaner
- ✓ Insured service
- ✓ Our cleaners are fully vetted
- ✓ Great customer service



Call today: 01359 258991  
[www.timeforyou.co.uk](http://www.timeforyou.co.uk)



### Could your garden do with a bit of TLC?

Local gardening service. Lawns mowed, hedges cut, weeds removed, etc.

Reasonable price and friendly service.

Call Adrian Murrell  
on 01284 830141.

## An Occasional Secretary

Do you sometimes need a secretary?

With over ten years' experience as a legal secretary for a leading local firm, I am now freelance, offering temporary holiday/illness cover or occasional support on an ad-hoc basis. Digital audio typing either at your premises or remotely. References available.

Abby Freeley

[alfbse@live.com](mailto:alfbse@live.com)

07803 581 950

Advertise  
in this space  
for just £6 per month.

# LAWSHALL TREASURE QUIZ

Saturday 25 - Sunday 26 August

A family fun quiz  
to help you explore  
the beautiful village  
at your own leisure.

£10 per team  
(max 5 per team)

Quiz sheets available from  
The Swan Inn between  
12-6pm on Saturday 25  
and 12-3pm on Sunday 26.

helps  
you better

**St Nicholas  
Hospice Care**



For more info please contact The Swan Inn.  
All proceeds to St Nicholas Hospice Care,  
kindly sponsored by The Clean Plumber.

**The Clean Plumber**   
clean water is life

## Richard Kemp

Councillor  
01787 378149

*Sponsors:* **Adam Kemp** BA Hons  
DipPFS Cert.CII (MP&ER)  
AMAS Investments Ltd (Director)  
Please contact for free financial  
and mortgage advice 01284  
724013 opt7 07988 961240  
Adam.kemp@amas.co.com

**DK Domestic Appliances Ltd** ~ Your local independent retailer

Stocking New and Reconditioned Appliances.

Fast and Guaranteed repair service for all makes of domestic appliances.

- ▣ Washing machines
- ▣ Tumble Dryers
- ▣ Dishwashers
- ▣ Electric cookers
- ▣ Fridges/Freezers



Large showroom at Finbows Yard,  
Bacton. Stowmarket IP14 4NH

Open Mon-Fri 9-5, Sat 10-2

**Tel: 01449 780398**

## HAWSTEAD VILLAGE HALL



BEAUTIFUL OAK-BEAMED HALL WITH  
KITCHEN, MEETING ROOM AND OUTSIDE  
PLAY AREA IN A RURAL SETTING

... available to hire for all celebrations, business meetings  
and club events (up to 100 guests standing or 80 seated).  
Facilities include a kitchen with optional crockery, cutlery  
and linen hire, internet access, drop-down projection  
screen, sound system and separate meeting room.  
Cleaning service included.

See our website for hire rates

**WWW.HAWSTEADVILLAGEHALL.CO.UK**

For bookings enquiries, please contact Sarah Webb  
on 01284 388124 or sarahlwebb84@gmail.com

**Anglia** DOMESTIC • COMMERCIAL • AGRICULTURAL  
**PEST MANAGEMENT**



insects✔ birds✔ moles✔ rabbits✔ rats✔

**Based in Lawshall**

**Contact Tim Cox on:**

**M 07776205346 T 01284 831042**

**info@angliapestmanagement.co.uk**

**www.angliapestmanagement.co.uk**

## **Lawshall Weather Report – June 2018**

According to the general UK weather reports, June 2018 was the hottest June since records began. Lawshall, it seems, did not quite agree, because the temperature figures were marginally lower than last year in each category. Rainfall, however, was a very different story with only 1mm recorded on Monday 4<sup>th</sup> when there was a heavy downpour.

### **Total rainfall:**

1mm in one day.            2017 was 72mm in 6 days.

Stowmarket 10-year average is 53mm in 9 days.

**Daytime average temp:** 22.9      2017 was 23.6

Stowmarket 10-year average is 19.1

**Highest temperature:**      29.6      2017 was 31.6

**Night-time average temp:** 12.3      2017 was 13.9

Stowmarket 10-year average is 9.9

**Lowest temperature:**    9.6            2017 was 10.8

*All temperature figures are shown in °c*

*Malcolm Edgar*



**A1 TREES**  
**tree-mend-us.com**



**TREE SURGERY**

**CONSULTANCY**

**STUMP REMOVAL**

**LANDSCAPE  
BUILDERS.co.uk**



**GARDEN DESIGN**

**LANDSCAPE BUILDS**

**FENCING**

**LAWNS**

**ANGLIA  
FIREWOOD.co.uk**



**KILN DRIED ASH DELIVERED TO YOUR DOOR**



Contact us for your free no obligation quote

**0800 112 3469**

Unit 7, The Brickworks, Old Stowmarket Road, Woolpit IP30 9QS

# USEFUL VILLAGE CONTACTS & INFORMATION

## Village Hall Management Committee

**Chairman:** Dave Henderson

**Secretary:** position vacant

**Treasurer:** Karen Wilcox 830725 karenjwilcox265@gmail.com

**Caretaker & Booking Secretary:** Sharon Marshall 830182 shazy68@hotmail.co.uk

**Committee Members:** David Henderson 828156 Ian Carrington 830497,  
Ian Copping 830430, John Chappell 830530, Julian Delefortrie 830544

## Lawshall Parish Council [www.lawshall.suffolk.gov.uk/](http://www.lawshall.suffolk.gov.uk/)

**Chairman:** Andrew Irish 827500 **Vice-Chairman:** Trevor Elmer 830870

**Clerk:** Dorothy Griggs 830813 **Councillors:** Ray Debenham 07908 656098  
David Griggs 830813 David Page 830968 Laura Williams 828477

**District Cllr:** James Long 830347 **County Cllr :**Richard Kemp 01787 378149

## Neighbourhood Watch Co-ordinator Mrs Pamela Pope 830716

**Contacts:** Ros Debenham 830640 Dorothy Griggs 830813

## Village Clubs and Organisations—held in the Village Hall

Lawshall & District Carpet Bowls: every Mon 2-4pm ; info 830693

Lawshall Toddlers: every Tues 09.30am-11.30, info Julie 830948

Tuesday Club: 2-4pm every week, info John Payne 830466

Women's Institute: 2nd Weds of month, 7.30pm, info Patricia Burton-Hopkins 830284

Table Tennis Friday evening monthly Contact Julian on 830544

**Not in VH:** Coldham Hall FC / Cricket - Contact Chris Toole; [loftytoole@yahoo.co.uk](mailto:loftytoole@yahoo.co.uk) or  
Ben Atkinson on 07921 837296 [www.hartestandcoldhamcc.blogspot.co.uk](http://www.hartestandcoldhamcc.blogspot.co.uk)

## Lawshall Postal Collections

Coldham, Mon-Fri 4pm, Sat 7.30am. The Glebe, Mon - Fri 4.30pm, Sat 11.30am.

Lambs Lane/Rectory Corner, Mon - Fri 9am; Sat 7am

Donkey Lane, Mon-Fri 4pm, Sat 11am. School/The Street, Mon-Fri 4.30pm; Sat 11.30am.

Lawshall Green, Mon - Fri 4pm; Sat 12 midday. NO Sunday collections.

## Suffolk Norse Bus Time Table 375 Route ~ Lawshall to Bury

The Street, opp Primary School: Mon-Fri 7.55am ; Weds, Fri & Sat 9.51am & 1.45pm  
Return leaves Bury Bus Station at: Weds & Sat 1pm & 5.35pm; Mon-Fri 3.50pm & 5.35pm

## Felix Sudbury Bus Timetable (Thursday only)

Leaving The Street at 9.40am & return trip leaving Sudbury bus station at 12.45pm.

## Library Van (route 7)

4 weekly: 2 and 30 August stopping at Free Church 9.50am ~ 10.20am,  
Swanfields 10.25am ~ 10.40am & Village Hall car park 10.45am ~ 11.25am.

## Refuse Collection

Early every Friday morning alternating weekly with blue bin & black bin  
(Saturday morning collection in week following a bank holiday).

## HANDY LOCAL NUMBERS

All Saints' Primary School 828223 \* All Saints' Church Revd Jeremy Parsons 846166  
Catholic Church, Fr Gerry Quigley 830393 \* Free Church, Paul Mitchell 828694  
Village Hall Lottery Co-ordinator: John Chappell 830530  
Local History Recorder, Lawshall Archives Group: Elizabeth Clarke 827275  
Willows Residential Care Home 830665  
Green Light Trust Office 830829 \*  
Forest For Our Children - Jenna Kitchen 830022

The Swan P H 828477  
Newspaper delivery - Sicklesmere Stores Ltd 01284 386303

Excelan Chauffeur Services 01284 706133 / 07816 663 542  
A1 Cars 24 hr Taxi 01284 766777  
Greenline Travel 07754 298690  
Traveline 0871 200 22 33

Anglian Water emergencies / enquiries 0845 7145145  
UK Power Networks Emergency number: 105  
EDF Electricity emergencies 0800 7838838  
Babergh District Council 01473 822801 Helpline 0300 123 4000  
Suffolk County Council 0345 606 6067

**Police:** Bury Police Station 774100  
Crime Stoppers 0800 555111  
Police HQ main switchboard (non-emergency) 01473 613500  
contact baberghwest.snt@suffolk.pnn.police.uk Tel 101 or 999 for emergency  
Suffolk Fire Service 01473 260588 e-mail : fire.admin@suffolk.gov.uk

Citizens Advice Bureau 753675  
Samaritans 116123 (Freephone)  
Bury Train Station Customer Service 0845 600 7245  
BBC Radio Suffolk 0800 1412121  
Tourist Information 01284 764667  
Bury Leisure Centre 01284 753496  
Bury Library 01284 732255

**Local Doctors:** Glemsford Practice 01787 280484 & Hartest Surgery 830202  
Long Melford Practice 01787 378226  
Mount Farm Surgery, Moreton Hall, Bury 769643  
NHS Direct 111 for urgent (non-emergency ) medical help  
West Suffolk Hospital switchboard 713000, A & E 713333  
St Nicholas' Hospice 766133. Patients' Line 725700

**Local Vets:** Swayne & Partners (BSE) 701444, (Melford) 01787 370773  
Eastgate Vet Group (BSE) 753961  
Moreton Hall (BSE) Vets 747000